



**ACE**  
**Engineering Academy**  
Leading Institute for ESE/GATE/PSUs

**DEEP**  
LEARN

HYDERABAD | DELHI | PUNE | BANGALORE | LUCKNOW | CHENNAI | VISAKHAPATNAM | VIJAYAWADA | TIRUPATHI | KOLKATA | AHMEDABAD

# ESE-2021

## PRELIMINARY EXAMINATION

### QUESTIONS WITH DETAILED SOLUTIONS

## MECHANICAL ENGINEERING

ACE Engineering Academy has taken utmost care in preparing the ESE-2021 Prelims Examination solutions. Discrepancies, if any, may please be brought to our notice. ACE Engineering Academy do not owe any responsibility for any damage or loss to any person on account of error or omission in these solutions. ACE Engineering Academy is always in the fore front of serving the students, irrespective of the examination type (GATE/ESE/PSUs/PSC/GENCO/TRANSCO etc.,).

All Queries related to ESE-2021 Prelims Solutions are to be sent to the following email address [hyderabad@aceenggacademy.com](mailto:hyderabad@aceenggacademy.com)

Contact Us : 040-23234418,19,20

[www.aceenggacademy.com](http://www.aceenggacademy.com)

# MECHANICAL ENGINEERING

## Subject wise Weightage

SUBJECT	No. of Questions
Fluid Mechanics and Hydraulic machine	13
Heat Transfer	03
Machine Design	10
Strength of Material	08
Renewable Sources of Energy	12
Basic Thermodynamics	12
Refrigeration & Air Conditioning	07
IC Engines	04
Power plant	13
Turbo-machinery	12
Production Engineering	07
Material Science	12
Theory of Machines	14
IM & OR	04
Mechatronics and Robotics	13
Maintenance Engineering	01
Engineering Mechanics	05
<b>Total</b>	<b>150</b>



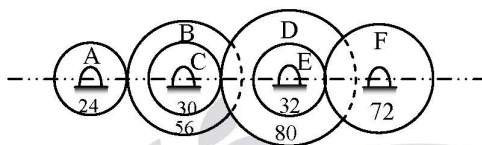
## ESE - 2021 Preliminary Examination

### MECHANICAL ENGINEERING

SET - D

18/07/21

01. The compound gear train shown in the figure below consists of compound gear B-C and D-E. All gears are mounted on parallel shafts. The motor shaft rotating at 800 rpm is connected to the gear A and the output shaft to the gear F. The number of teeth on gears A, B, C, D, E and F are 24, 56, 30, 80, 32 and 72 respectively. What is the speed of the gear F ?



- (a) 57.14 rpm      (b) 32.51 rpm      (c) 74.63 rpm      (d) 69.72 rpm

**01. Ans: (a)**

02. A quick-return mechanism is to be designed, where the outward stroke must consume 1.2 sec and the return stroke 0.8 sec. If the cycle time is 2.0 s/rev, what is the speed at which the mechanism should be driven ?

- (a) 10 rev/s      (b) 30 rev/s  
(c) 10 rev/min      (d) 30 rev/min

**02. Ans: (d)**

03. The following data relate to a single cylinder reciprocating engine : mass of reciprocating parts = 40 kg, mass of revolving parts = 30 kg at crank radius, speed = 150 rpm, stroke = 350 mm. If 60% of the reciprocating parts and all the revolving parts are to be balanced, what is the balance mass required at a radius of 320 mm?

- (a) 15.27 kg      (b) 21.43 kg  
(c) 24.96 kg      (d) 29.53 kg

**03. Ans: (d)**

04. A leaf spring consists of seven steel plates, each 60 mm wide and 6 mm thick. What is the length of the spring if it is to carry a central load of 3 kN, without the stress exceeding 150 MPa ?

- (a) 547 mm      (b) 498 mm  
(c) 494 mm      (d) 504 mm

**04. Ans: (d)**

## ONLINE COURSES

CE | ME | EC | EE | CSIT | IN | PI

- for **ESE | GATE | SSC | PSUs** curated by India's best minds. Access courses through Mobile/Tablet from anywhere.
- We have subscriptions options of 1 Month, 3 Months, 6 Months, 12 months, 18 months and 24 months.

## RECORDED VIDEO LECTURES

- GATE + PSUs (650+ Hours\*) English
- GATE + PSUs (650+ Hours\*) Hinglish
- ESE : General Studies (250+ Hours\*)
- SSC-JE : Technical (Civil) (400+ Hrs\*)
- ESE + GATE + PSUs (1000+ Hours\*)
- SSC-JE : GS (200+ Hours\*)
- APPSC / TSPSC - Technical (400+Hours) (Telugu + English )
- APPSC / TSPSC - GS - (250+Hours) (Telugu + English)
- GENCO / TRANSCO -(600+Hours) (Telugu + English)
- Subject wise courses available for SSC - JE : GS & Technical (Civil).
- Subject wise courses available for GATE / ESE (Hinglish).

## SALIENT FEATURES

- Dynamic & Experienced Faculty.
- Covers Exam Preparation Strategy and Live Doubt clearing sessions.
- Facilitates Enhanced learning by incorporating 2d & 3d animations.
- Free Online Test Series (Total 117 tests, subject wise, sectional wise, and full length mock tests.
- Compose online study notes and save it for future reference.
- Comprises of weekly self assessment tests.
- Free Interview Guidance & Post GATE Guidance for subscribers.
- ASK AN EXPERT feature for doubt clarifications via emails/video (services to be availed within 12 hrs.)
- Procure Full set of Study Material (Optional)\*
- EMI option available.

Get **10% DISCOUNT**

USE CODE: **ESE10**

Valid Till: 30th July 2021



Scan QR Code Download the  
Android App (Mobile/Tab)\*  
[www.deep-learn.in](http://www.deep-learn.in)



05. According to maximum shear stress theory, with comparison to yield strength in tension, the yield strength in shear is
- (a) half the yield strength in tension.
  - (b) same as that of yield strength in tension.
  - (c) double the yield strength in tension.
  - (d) 1.33 times that of the yield strength in tension.

**05. Ans: (a)**

06. In curved beams, normally the nature of stress distribution is
- (a) linear
  - (b) circular
  - (c) parabolic
  - (d) hyperbolic

**06. Ans: (d)**

07. Consider the following statements regarding crack :

- 1. Crack is more likely to occur in the regions of discontinuity such as oil holes.
- 2. Crack is more likely to occur in the regions of irregularities in machining operations such as stamp mark.
- 3. Crack is more likely to occur in the internal cracks due to defects in materials like blow holes.

Which of the above statements are correct ?

- (a) 1 and 2 only
- (b) 2 and 3 only
- (c) 1 and 3 only
- (d) 1, 2 and 3

**07. Ans: (d)**

08. The yield strength of bolt material is 300 MPa and factor of safety is 2.5. What is the maximum principal stress using maximum principal stress theory ?

- (a) 750 MPa
- (b) 120 MPa
- (c) 27.38 MPa
- (d) 10.95 MPa

**08. Ans: (b)**

09. Which one of the following theories gives satisfactory results for brittle materials ?

- (a) Maximum principal stress theory
- (b) Maximum shear stress theory
- (c) Distortion energy theory
- (d) Shear stress energy theory

**09. Ans: (a)**

10. A cast steel bar having an ultimate strength of 120 MPa is subjected to a reversed, repeated, bending load. The bar will be machined to a rectangular cross-section, 150 mm wide  $\times$  200 mm high. What is the equivalent diameter ?

- (a) 14 mm      (b) 30 mm      (c) 140 mm      (d) 300 mm

**10. Ans: (c)**

11. Consider the following statements regarding typical analysis of bolt failure :

1. 15% failure of bolt occur at the fillet under the head.
2. 50% failure of bolt occur at the end of threads on the shank.
3. 80% failure of bolt occur in the threads that are in contact with the nut.

Which of the above statements is/are correct ?

- (a) 1 only      (b) 3 only  
(c) 2 and 3 only      (d) 1, 2 and 3

**11. Ans: (a)**

12. Which of the following are the functions of lubrication in a bearing unit ?

1. To protect the bearing components from corrosion.
2. To absorb heat from the bearing unit.
3. To carry heat away from the bearing unit.

Select the correct answer using the code given below :

- (a) 1 and 2 only      (b) 1 and 3 only  
(c) 2 and 3 only      (d) 1, 2 and 3

**12. Ans: (d)**

13. Consider the following statements regarding clutches :

1. Dry clutch has higher coefficient of friction compared to wet clutch.
2. The torque capacity of wet clutch is high compared to dry clutch.
3. The engagement in a dry clutch is smoother than in case of wet clutch.

Which of the above statements is/are correct ?

- (a) 1 only      (b) 1 and 3 only  
(c) 2 only      (d) 1, 2 and 3

**13. Ans: (a)**



**ACE<sup>®</sup> x DEEP**  
Engineering Academy  
Leading Institute for ESE/GATE/PSUs  
**LEARN**

**EXCLUSIVE**

**ONLINE**  
**LIVE CLASSES**

**ENGLISH**

**CE | ME | EC | EE | CSIT**



# **ESE | GATE | PSUs - 2022/2023**

## **COURSE DETAILS**

- For ESE+GATE+PSUs Students
  1. Online Live Classes - Technical Subjects Only.
  2. Recorded Classes - General Studies Subjects (on ACE Deep Learn Platform).
- Recorded version of the online live class will be made available throughout the course (with 3 times view).
- Doubt clearing sessions and tests to be conducted regularly.
- 5 to 6 hours of live lectures per day in week days. On Sundays and Public Holidays 6-7 Hours of Live Online Lectures (6 days a week).
- Access the lectures from any where.

New Batch  
Start from:

**24<sup>th</sup> JULY  
2021**

### **DISCOUNTS**

- 25% OFF\* for ACE Old Students
- 20% OFF\* for IIT / NIT, Students
  - 15% OFF\* for IIIT & Govt. College students

**APPSC / TSPSC - AEE (CE)**  
Batch Date: **19<sup>th</sup> July, 2021**

**GENCO / TRANSCO / DISCOMs**  
Batch Date: **5<sup>th</sup> July, 2021**

**SSC-JE (General Intelligence)**  
Batch Date: **2<sup>nd</sup> July, 2021**

**Call: 040-23234418/19/20 | Email: [hyderabad@aceenggacademy.com](mailto:hyderabad@aceenggacademy.com)**

14. Which of the following factors can cause misalignment of the teeth on the pinion relative to those on the gear ?

1. Inaccurate gear teeth
2. Misalignment of the axes of shafts carrying gears
3. Thermal distortions during operation

Select the correct answer using the code given below :

- (a) 1 and 2 only                      (b) 1 and 3 only  
(c) 2 and 3 only                      (d) 1, 2 and 3

**14. Ans: (d)**

15. Consider the following statements regarding welded and riveted joints :

1. Welded assemblies are tight and leak proof as compared with riveted assemblies.
2. Single-welded V-joint is less reliable than square butt joint.
3. Welding results in a thermal distortion of the parts, thereby inducing residual stresses.

Which of the above statements is/are correct ?

- (a) 1 only                              (b) 1 and 3 only  
(c) 2 only                              (d) 1, 2 and 3

**15. Ans: (b)**

16. Iron at 20°C is BCC with atoms of atomic radius 0.124 nm. What is the lattice constant 'a' for the cube edge of the iron unit cell ?

- (a) 0.2864 nm                      (b) 0.1496 nm  
(c) 0.2173 nm                      (d) 0.1756 nm

**16. Ans: (a)**

17. Copper has the FCC crystal structure and a unit cell with a lattice constant of 0.361 nm. What is the interplanar spacing ' $d_{220}$ ' ?

- (a) 0.085 nm                      (b) 0.174 nm  
(c) 0.206 nm                      (d) 0.128 nm

**17. Ans: (d)**

18. Which one of the following is **not** a step of lever rule of determination of phase amounts ?
- (a) A tie line is constructed across the two-phase region at the temperature of the alloy.
  - (b) The overall alloy composition is located on the tie line.
  - (c) Perpendiculars are dropped from these intersections to the horizontal composition axis, from which the composition of each of the respective phases is read.
  - (d) The fraction of one-phase is computed by taking the length of tie line from the overall alloy composition to the phase boundary for the other phase and dividing by the total tie line length.

**18. Ans: (c)**

19. Consider the following statements regarding polymeric materials :

- 1. A plastic material that requires heat to make it formable (plastic) and upon cooling, retains its shape is known as thermosetting plastic.
- 2. The chemical reaction in which high molecular mass molecules are formed from two or more monomers is called chain polymerization.
- 3. A polymer chain consisting of two or more types of monomeric units is called copolymer.

Which of the above statements is/are CORRECT ?

- (a) 1 and 2 only
- (b) 2 and 3 only
- (c) 2 only
- (d) 3 only

**19. Ans: (d)**

20. As per mechanical properties, which one of the following microconstituents is soft and ductile ?

- (a) Bainite
- (b) Martensite
- (c) Spheroidite
- (d) Tempered martensite

**20. Ans: (c)**

21. The simultaneous compaction and shaping of a ceramic powder (and binder) by pressure applied uniformly in all directions is known as

- (a) Glaze pressing
- (b) Porcelain pressing
- (c) Slip pressing
- (d) Isostatic pressing

**21. Ans: (d)**

22. An electric motor drives a punching press. A flywheel fitted to the press has a radius of gyration of 0.5 m and runs at 250 rpm. The press is capable of punching 800 holes per hour with each punching operation taking 1.5 seconds and requiring 12,000 N-m of work. The energy delivered by the motor during punching operation is

- (a) 2000 N-m                      (b) 3000 N-m  
(c) 4000 N-m                      (d) 5000 N-m

**22. Ans: (b)**

23. A linkage has 11 links and 4 loops. What is the degree of freedom if it has only single turning pairs?

- (a) 0                      (b) 1                      (c) 2                      (d) 3

**23. Ans: (c)**

24. Which one of the following is the application of first inversion of single-slider-crank chain ?

- (a) Hand-pump  
(b) Reciprocating engine  
(c) Elliptical trammel  
(d) Whitworth quick-return mechanism

**24. Ans: (b)**

25. Consider the following statements regarding cams :

1. A cam in which the follower moves radially from the centre of rotation of the cam is known as a disc cam.
2. A globoidal cam is a double-disc cam, the two discs being keyed together and are in constant touch with the two rollers of a follower.
3. A conjugate cam can have two types of surfaces, convex or concave.
4. In a spherical cam, the follower oscillates about an axis perpendicular to the axis of rotation of the cam.

Which of the above statements are correct ?

- (a) 1 and 4 only                      (b) 2 and 4 only  
(c) 2 and 3 only                      (d) 1, 2, 3 and 4

**25. Ans: (d)**



**ACE<sup>®</sup> x DEEP**  
Engineering Academy  
Leading Institute for ESE/GATE/PSUs  
**LEARN**



**AST**

**ACE SCHOLARSHIP TEST**



**A NATIONAL LEVEL SCHOLARSHIP TEST FOR ENGINEERS**

**CE | ME | EC | EE | CSIT | IN | PI**

**ESE | GATE | PSUs**  
**2022 / 2023**

GET WORTH

**3 CR**  
**SCHOLARSHIPS**



**Exam Date : 19<sup>th</sup> JULY 2021**

**Timing: 4:00 PM - 5:30 PM**

**No. of Questions: 50**

25 Q: 1 Mark, 25 Q: 2 mark

**Total : 75 Marks**

**Duration : 90 Mins.**

**ONLINE MODE**



- AI based proctoring examination
- candidates can take the online test from any location using a laptop/ PC with a connected webcam and good internet connection.
- Audio and video must be turned on through out the duration of the test.



Scan Qr Code For  
Registration & More Details

**Applicable for:**

**DEEP LEARN**

**LIVE CLASSES**

**CLASSROOM COACHING**

**Last Date to Apply**  
**18<sup>TH</sup> JULY 2021**

**Fee: Rs.100/- Only**

**Allocation of Scholarships**

**75% Fee Waiver\***  
**1st Position**

**60% Fee Waiver\***  
**2nd Position**

**50% Fee Waiver\***  
**3rd Position**

♦ 30% Fee Waiver\* 4th Position ♦ 20% Fee Waiver\* 5th Position ♦ 10% Fee Waiver\* 6th Position

For attaining scholarships, the above positions have to achieve a minimum of **40% marks**.

Applicable for batches commencing between **JULY 2021 to AUGUST 2021 batches**

**Call: 040-23234418/19/20**

**aceenggacademy.com**



26. Under which of the following conditions is Coriolis component encountered in the relative acceleration of two points ?

1. The two points are coincident, but on different links.
2. The point on one link traces a path on the other link.
3. The link that contains the path rotates.

Select the correct answer using the code given below :

- |                  |                  |
|------------------|------------------|
| (a) 1 and 2 only | (b) 1 and 3 only |
| (c) 2 and 3 only | (d) 1, 2 and 3   |

**26. Ans: (d)**

27. A mass 'm' attached to a light spring oscillates with a period of 2 seconds. If the mass is increased by 2 kg, the period increases by 1 second. What is the value of the mass ?

- |            |            |            |            |
|------------|------------|------------|------------|
| (a) 0.9 kg | (b) 1.6 kg | (c) 2.1 kg | (d) 2.7 kg |
|------------|------------|------------|------------|

**27. Ans: (b)**

28. What is the critical speed of the shaft if its natural frequency of transverse vibration is 2.85 Hz ?

- |             |             |             |               |
|-------------|-------------|-------------|---------------|
| (a) 171 rpm | (b) 285 rpm | (c) 570 rpm | (d) 142.5 rpm |
|-------------|-------------|-------------|---------------|

**28. Ans: (a)**

29. Consider the following statements regarding gears :

1. The ratio of number of teeth on the gear to that on the pinion is known as gear ratio.
2. The circle passing through the tips of teeth is called dedendum circle.
3. The circle passing through the roots of teeth is called addendum circle.
4. Backlash is the difference between the space width and the tooth thickness along the pitch circle.

Which of the above statements are correct ?

- |                     |                  |                  |                   |
|---------------------|------------------|------------------|-------------------|
| (a) 1, 2 and 3 only | (b) 1 and 4 only | (c) 2 and 3 only | (d) 1, 2, 3 and 4 |
|---------------------|------------------|------------------|-------------------|

**29. Ans: (b)**

30. The number of teeth of a spur gear is 30 and it rotates at 200 rpm. What is the pitch line velocity if it has a module of 2 mm ?

- |                |                |                |                |
|----------------|----------------|----------------|----------------|
| (a) 341.7 mm/s | (b) 497.2 mm/s | (c) 628.3 mm/s | (d) 758.5 mm/s |
|----------------|----------------|----------------|----------------|

**30. Ans: (c)**

31. Which one of the following lubricants is used in forward hot extrusion of steel ?

- (a) Molten glass
- (b) Soap solution
- (c) Copper sulphate
- (d) Vegetable oil

**31. Ans: (a)**

32. Which one of the following statements is not the correct statement regarding operating characteristics (OC) curve for sampling plan ?

- (a) It shows ability to distinguish between good and bad lots.
- (b) No sampling plans can give complete protection against acceptance of defectives.
- (c) Larger the sample size, steeper is the slope of the curve.
- (d) Acceptance number is zero for ideal sampling plan.

**32. Ans: (d)**

33. Which one of the following statements is **not** correct for forward or direct extrusion process ?

- (a) High friction forces must be overcome.
- (b) High extrusion forces are required but mechanically simple and uncomplicated.
- (c) Low scrap or material waste only 5 - 6% of billet weight.
- (d) Simple, but the material must slide along the chamber wall.

**33. Ans: (c)**

34. Consider the following statements regarding defects in forgings :

1. Flakes are internal breaks or ruptures occurring in some grades of alloy steel.
2. Die shift is caused by misalignment between the top and bottom forging dies.
3. Fins and rags are small projections or loose metal driven into the surface of the forging.

Which of the above statements are CORRECT ?

- (a) 1 and 2 only
- (b) 1 and 3 only
- (c) 2 and 3 only
- (d) 1, 2 and 3

**34. Ans: (d)**

35. Consider the following statements regarding desirable properties of cutting fluid :

1. It should get oxidised when left in air.
2. It should react with the materials of machine tool parts.
3. It should wet the surface of cutting tool and workpiece.

Which of the above statements is/are CORRECT ?

- (a) 2 only                                      (b) 3 only  
(c) 2 and 3 only                              (d) 1, 2 and 3

**35. Ans: (b)**

36. Consider the following statements regarding limits and fits :

1. Actual size is the standard size for the part and is the same both for the hole and its shaft.
2. Basic size is the dimension as measured on the manufactured part.
3. Deviation is the algebraic difference between a size and the corresponding basic size.

Which of the above statements is/are CORRECT ?

- (a) 3 only                                      (b) 1 and 3 only  
(c) 2 only                                      (d) 1, 2 and 3

**36. Ans: (a)**

37. Which of the following statements is not correct about PERT ?

- (a) Network is constructed based on the events.  
(b) It does not take uncertainties involved in the estimation of times.  
(c) Network deals with uncertainties and hence three time estimations are considered.  
(d) As there is no certainty of time, activity duration cannot be reduced.

**37. Ans: (b)**

38. Parallel misalignment is present when

- (a) two shafts are parallel to each other but are not in the same plane.  
(b) two shafts are parallel to each other and are in the same plane.  
(c) the shafts are not parallel to each other.  
(d) the shafts are aligned with each other.

**38. Ans: (b)**

Now Deep Learn Pre-Recorded Videos are Available in:

**हिंदी + English (Hinglish)**

for **GATE (ECE | EEE)** Technical

Launching Soon: GATE (ME | CE)

\*Subjects are being released in sequence



Pre-Recorded Classes\*

**GENCO / TRANSCO  
DISCOMs**



\*\* Offer price: without study material

Pre-Recorded Classes

**APPSC / TSPSC (AEE)**

**GENERAL STUDIES**

**TECHNICAL (CIVIL)**

**GET 20% DISCOUNT**

USE CODE

**TSPSC20**

Valid till 31st July, 2021

EEE  
Launching  
Soon



\* Subjects are being released in sequence

39. The major limitation with displacement or proximity probes is

- (a) Size
- (b) Time
- (c) Accuracy
- (d) Cost

**39. Ans: (a)**

40. Which one of the following contains design data on all products, e.g., their constituent components and parts ?

- (a) Engineering data master file
- (b) Process data master file
- (c) Inventory master file
- (d) Sales master file

**40. Ans: (a)**

41. Which one of the following is the cutter with a curved tooth outline of the same shape as the profile of the workpiece ?

- (a) Plain milling cutter
- (b) Face milling cutter
- (c) End milling cutter
- (d) Profile milling cutter

**41. Ans: (d)**

42. Which one of the following is a joining process that may employ acetylene, natural gas, butane in combination with oxygen to supply the heat required to melt the filler rod and diffuse it into the surface of the base metal ?

- (a) Furnace brazing
- (b) Torch brazing
- (c) Induction brazing
- (d) Dip brazing

**42. Ans: (b)**

43. Consider the following statements regarding modulation :

1. The modulation is essential in communication systems, where a weak signal is transmitted by the use of a carrier signal.
2. When the frequency of the high frequency signal is varied in accordance with the intensity of the low-frequency weak signal, the modulation is said to be frequency modulation.
3. The process of recovering original baseband signal from the modulated signal is called phase modulation.

Which of the above statements are CORRECT ?

- |                  |                  |
|------------------|------------------|
| (a) 1 and 3 only | (b) 1 and 2 only |
| (c) 2 and 3 only | (d) 1, 2 and 3   |

**43. Ans: (a)**

44. Consider the situation where a microprocessor gives an output of an 8-bit word. This is fed through an 8-bit digital-to-analog converter to a control valve. The control valve requires 6.0 V to be fully open. If the fully open state is indicated by 11111111, then what is the output to the valve for a change of 1 bit ?

- |             |             |
|-------------|-------------|
| (a) 0.033 V | (b) 0.053 V |
| (c) 0.043 V | (d) 0.023 V |

**44. Ans: (d)**

45. Which one of the following is **not** an application of Hall effect sensor ?

- (a) Magnetic switch for electric transducer
- (b) Measurement of current
- (c) Measurement of acceleration
- (d) Measurement of power

**45. Ans: (d)**

46. A man whose weight is 650 N, standing on the ground, raises a load of 3000 N by means of single string system of pulleys. There are six light pulleys in each block. The thrust of the man on the ground is

- |           |           |           |           |
|-----------|-----------|-----------|-----------|
| (a) 120 N | (b) 135 N | (c) 150 N | (d) 175 N |
|-----------|-----------|-----------|-----------|

**46. Ans: (c)**

47. A particle starts with an initial velocity of 200 cm/s and moves with a uniform retardation of 10 cm/s<sup>2</sup>. If it describes 1500 cm in time  $t$ , what is/are the possible value(s) of  $t$ ?

- (a) 10 sec only
- (b) 10 sec and 30 sec
- (c) 30 sec only
- (d) 5 sec and 10 sec

**47. Ans: (a)**

48. Consider the following statements for system of forces :

1. Two or more forces that act at the same point are called coplanar forces.
2. Two or more forces whose directed arrows lie in same plane are called concurrent forces.
3. Varignon's theorem states that 'the moment of several concurrent coplanar forces about any point O in their plane equals the moment of their resultant about the point O'.
4. Lami's theorem states that if a body is in equilibrium under the action of three forces, each force is proportional to the sine of angle between the other forces.

Which of the above statements are correct ?

- (a) 1, 2 and 4 only
- (b) 1 and 4 only
- (c) 3 and 4 only
- (d) 1, 2 and 3 only

**48. Ans: (c)**

49. Consider the following statements related to stress and strain :

1. Shear stress is always tangential to the area over which it acts.
2. Shear stresses on the transverse pair of faces are known as complimentary shear stresses.
3. Shear strain is defined as the change in the right angle of the element measured in radians.
4. Modulus of rigidity is the ratio of shear strain to shear stress.

Which of the above statements are correct ?

- (a) 1, 3 and 4 only
- (b) 2 and 4 only
- (c) 3 and 4 only
- (d) 1, 2 and 3 only

**49. Ans: (d)**

# GATE - 2022

## ONLINE TEST SERIES

**AVAILABLE  
NOW**

No. of Tests **65**

+

**Free** 52 Practice Tests of  
GATE - 2021 Online Test Series

Total Tests **117**

AVAIL  
**10%  
DISCOUNT**

♦ GATE 2021 Online Test Series will be available on **15<sup>th</sup> APRIL 2021**

♦ Offer starts from 21st June 2021 to 20th July 2021

# GATE + ESE (Prelims) 2022

**COMBINATION PACK**

## ONLINE TEST SERIES

**AVAILABLE  
NOW**

No. of Tests **65**

+

**Free** 52 Practice Tests of  
GATE - 2021 Online Test Series

Total Tests **117**

AVAIL  
**10%  
DISCOUNT**

♦ GATE 2021 Online Test Series will be available on **15<sup>th</sup> APRIL 2021**

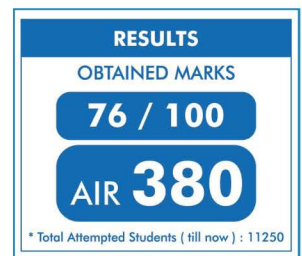
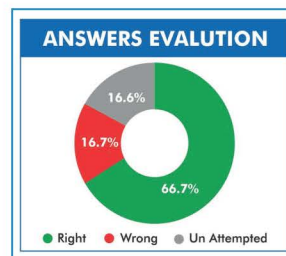
♦ ESE 2022 Prelims, the number of tests and schedule will be updated once notification released

♦ Offer starts from 21st June 2021 to 20th July 2021

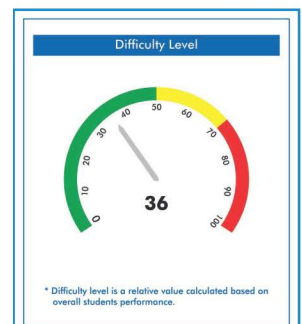
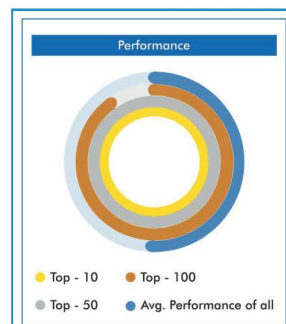
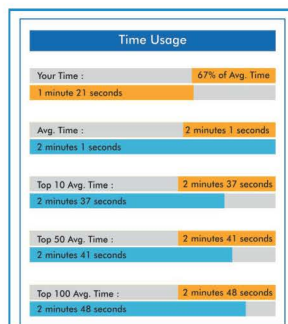
### HIGHLIGHTS

- Detailed Solutions are Available.
- Video Solutions are Available for Difficult Questions.
- All India rank will be given for each test.
- Comparison with all India toppers of ACE student.

### TEST WISE STATISTICS:



### QUESTION WISE STATISTICS:



50. Consider the following statements for stress and strain analysis :

1. The stress components on any inclined plane can easily be found with the help of a geometrical construction known as Mohr's stress circle.
2. The ratio of longitudinal strain to lateral strain is known as Poisson's ratio.
3. When a body is acted upon by three mutually perpendicular forces, there is change in the volume of the body which is referred to as dilation of the material.
4. The ratio of original volume to increase in volume is known as volumetric strain.

Which of the above statements are correct ?

- (a) 1 and 3 only
- (b) 2 and 4 only
- (c) 3 and 4 only
- (d) 1, 2, 3 and 4

**50. Ans: (a)**

51. The stresses on two perpendicular planes through a point in a body are 160 MPa and 100 MPa, both compressive, along with a shear stress of 80 MPa. What is the normal stress on a plane inclined at 30° to the plane of 160 MPa stress ?

- (a) – 42.4 MPa
- (b) – 75.7 MPa
- (c) – 59.1 MPa
- (d) – 86.3 MPa

**51. Ans: (b)**

52. Consider the following statements regarding types of supports and beams :

1. When both supports of beams are roller supports, the beam is known as simply supported beam.
2. A beam with one end fixed and the other end free is known as fixed beam.
3. A beam with both ends fixed is known as cantilever beam.
4. A beam with one end fixed and the other simply supported is known as propped cantilever.

Which of the above statements is/are correct ?

- (a) 1 only
- (b) 1 and 4 only
- (c) 1, 3 and 4 only
- (d) 2, 3 and 4 only

**52. Ans: (b)**

53. Consider the following statements regarding stress in beam :

1. If a member is subjected to equal and opposite couples acting in the same longitudinal planes, the member is said to be in pure bending.
2. The internal stresses developed in the beam are known as flexural stresses.
3. There is an intermediate surface known as neutral surface, at which the stress is zero.
4. An axis obtained by intersection of the neutral surface and a cross-section is known as neutral axis.

Which of the above statements are correct ?

- |                  |                   |
|------------------|-------------------|
| (a) 2 and 3 only | (b) 1 and 4 only  |
| (c) 3 and 4 only | (d) 1, 2, 3 and 4 |

**53. Ans: (d)**

54. Consider the following statements for the symmetric beam under pure bending :

1. In the elastic range, the normal stress varies linearly with the distance from the neutral surface.
2. As long as the stresses remain in the elastic range, the neutral axis passes through the centroid of the section.
3. If stresses are in the plastic range, the neutral axis passes through the centroid of the section.

Which of the above statements is/are correct ?

- |                  |                  |
|------------------|------------------|
| (a) 1 only       | (b) 2 only       |
| (c) 1 and 2 only | (d) 2 and 3 only |

**54. Ans: (c)**

55. The volume of FCC unit cell in terms of the atomic radius R is

- |                           |                          |
|---------------------------|--------------------------|
| (a) $V_c = 16R^3\sqrt{3}$ | (b) $V_c = 8R^3\sqrt{2}$ |
| (c) $V_c = 16R^3\sqrt{2}$ | (d) $V_c = 8R^3\sqrt{3}$ |

**55. Ans: (c)**

56. Which one of the following alloying ingredients increases the harden ability and forms carbides for wear resistance?

- |              |                |
|--------------|----------------|
| (a) Chromium | (b) Molybdenum |
| (c) Nickel   | (d) Manganese  |

**56. Ans: (a)**

57. Which one of the following related to the most stable arrangement of atoms in a crystal is *not* correct?

- (a) Preserves electrical neutrality
- (b) Maximizes strong ion-ion repulsion
- (c) Satisfies discreteness of all covalent bonds
- (d) Packs the atoms as closely as possible

**57. Ans: (d)**

58. The dielectric constant of rubber varies between

- (a) 0.5 and 1.0
- (b) 1.0 and 1.5
- (c) 1.5 and 2.0
- (d) 2.5 and 5.0

**58. Ans: (d)**

59. Consider the following statements for ductile fracture:

- 1. The material undergoes substantial plastic deformation with high energy absorption before fracture.
- 2. Presence of cracks on the surface of material initiates this type of failure.
- 3. Fracture occurs due to necking.

Which of the above statements is/are CORRECT?

- (a) 1 only
- (b) 1 and 2 only
- (c) 2 and 3 only
- (d) 1 and 3 only

**59. Ans: (d)**

60. The TTT diagram shows the times required for isothermal transition from

- (a) austenite to pearlite.
- (b) austenite to ferrite.
- (c) ferrite to pearlite.
- (d) martensite to pearlite.

**60. Ans: (a)**

# TSPSC

**ASSISTANT EXECUTIVE  
ENGINEERS**

## ONLINE TEST SERIES



Starts from:  
**26<sup>th</sup> JULY**  
2021

**No. of Tests: 30**  
Subject wise : **22**  
Full Length Mock Tests : **8**



## ESE - 2021 MAINS TEST SERIES

**No. of Tests: 10**  
(Subject wise:6, Mock Tests: 4)

**Free for all ESE 2021 Prelims  
Qualified Students**

Commencing from  
**28<sup>th</sup> August, 2021**

All Tests will be conducted  
in **QCAB format**

Call: 040-48539866 / 40136222  
Email: [testseries@aceenggacademy.com](mailto:testseries@aceenggacademy.com)

61. Consider the following statements regarding mechatronics systems:

1. The anti-lock brakes on a car are a simple example of a real time computing systems
2. The completion of an operation after its deadline is considered useless in soft real time system.
3. The hard real time system tolerates lateness and may respond with decreased service quality.

Which of the above statements is/are CORRECT ?

- (a) 1 only                                      (b) 2 and 3 only  
(c) 3 only                                      (d) 1, 2 and 3

**61. Ans: (a)**

62. Which one of the following materials has least piezoelectric charge sensitivity ?

- (a) Quartz                                      (b) Barium Titanate  
(c) PZT    (d) PVDF

**62. Ans: (a)**

63. The ideal hydraulic rotary actuator provides shaft torque,  $T$ , which is

- (a) equal to displaced volume measured.  
(b) inversely proportional to the displaced volume measured.  
(c) proportional to the differential pressure.  
(d) inversely proportional to the differential pressure.

**63. Ans: (c)**

64. An ammeter requires a change of 3 A in its coil to produce a change in deflection of the pointer by 12 mm. What is the static sensitivity ?

- (a) 36 mm/A                                      (b) 9 mm/A  
(c) 4 mm/A                                      (d) 15 mm/A

**64. Ans: (c)**

65. What is the force needed to apply to a piston of 2 cm radius in order to result a force of 6000 N at the working piston of radius 6 cm ?

- (a) 1334 N                                      (b) 333 N  
(c) 1050 N                                      (d) 667 N

**65. Ans: (d)**

66. The following symbol in the ladder logic represents :



- (a) Normally open contacts
- (b) Normally closed contacts
- (c) Output loads
- (d) Special instruction

**66. Ans: (c)**

67. The settling time for a unit step response of a second-order system is

- (a) proportional to the natural frequency.
- (b) inversely proportional to the natural frequency.
- (c) equal to the damping ratio.
- (d) proportional to the damping ratio.

**67. Ans: (b)**

68. A typical wrist mechanism with three rotational joints would be indicated by

- (a) TRL
- (b) TRT
- (c) LLL
- (d) TRR

**68. Ans: (d)**

69. The Analog-to-Digital conversion process involves :

1. Quantizing
2. Sampling
3. Encoding

What is the correct sequence ?

- (a) 2-1-3
- (b) 2-3-1
- (c) 3-1-2
- (d) 3-2-1

**69. Ans: (a)**

**Directions:** Each of the next six (06) items consists of two statements, one labelled as 'Statement (I)' and the other labelled as 'Statement (II)'. You are to examine these two statements carefully and select the answers to these items using the codes given below :

**Codes :**

- (a) Both Statement (I) and Statement (II) are individually true and Statement (II) is the correct explanation of Statement (I).
- (b) Both Statement (I) and Statement (II) are individually true, but Statement (II) is not the correct explanation of Statement (I).
- (c) Statement (I) is true, but Statement (II) is false.
- (d) Statement (I) is false, but Statement (II) is true.

70. **Statement (I):** Gravity is the driving force behind flows through open channels.

**Statement (II):** Gravity stands to reason that the ratio of inertial to gravitational forces will play a major role in open channel flow analysis.

**70. Ans: (a)**

71. **Statement (I):** The viscosity of liquids decreases with the increase of temperature while the viscosity of gases increases with the increase of temperature.

**Statement (II):** The viscous forces in a fluid are due to cohesive forces and molecular momentum transfer.

**71. Ans: (a)**

72. **Statement (I):** If two systems are in thermal equilibrium with a third system, then they are not in thermal equilibrium with each other.

**Statement (II):** Zeroth law of thermodynamics is the basis for temperature.

**72. Ans: (d)**

73. **Statement (I):** A thermal energy reservoir is a system that always remains at constant temperature even though the heat is added to or removed from it.

**Statement (II):** A thermal reservoir that supplies heat energy is called sink and one that absorbs the heat energy is called source.

**73. Ans: (c)**



**ACE<sup>®</sup> x DEEP**  
Engineering Academy  
Leading Institute for ESE/GATE/PSUs  
**LEARN**



# KPSC

KARNATAKA PUBLIC SERVICE COMMISSION

## WATER RESOURCE DEPARTMENT

ASSISTANT EXECUTIVE ENGINEER/  
ASSISTANT ENGINEER

**ONLINE  
TEST SERIES**

**5 FULL LENGTH  
MOCK TESTS**

**STARTS FROM:  
5<sup>TH</sup> JULY 2021**

All tests will be available till **KWRD Examination** | Call: 040-48539866, 4013 6222 | Email: testseries@aceenggacademy.com



## GUJARAT ENERGY TRANSMISSION CORPORATION LTD.

Vidyut Sahayak (Junior Engineer)  
Electrical

**ONLINE TEST SERIES**

**6**

Full Length Mock Tests

Starts from  
**3<sup>rd</sup> July**  
2021

Call: 040-48539866, 4013 6222  
Email: testseries@aceenggacademy.com

All tests will be available till GETCO Examination.

Note: Gujarati language and grammar questions are not included in the full length mock tests.



## TSPSC | APPSC

**GROUP -I  
(PRELIMS)**

&

**GROUP -II  
(PAPER-I)**

## ONLINE TEST SERIES

**TOTAL NO. OF TESTS: 30**  
SYLLABUS AND SCHEDULE IS ENCLOSED

STARTS FROM: **9<sup>TH</sup> JULY, 2021**

**NOTE:** Tests will be conducted in Telugu Medium.



74. **Statement (I):** Wear is an issue whenever two components operate with relative motion between them or when liquids or solids impinge on a surface at high velocity.

**Statement (II):** Wear is often cumulative and can eventually render the components incapable of delivering their expected performance.

**74. Ans: (b)**

75. **Statement (I):** Increased productivity, reduced cost of labour and improved quality can be achieved by automation.

**Statement (II):** Due to automation in process inventory, dependence on operator skills may be increased.

**75. Ans: (c)**

76. In various solar energy storage systems, pumped hydro-electric storage system falls under which one of the following categories ?

- (a) Thermal energy storage
- (b) Electrical energy storage
- (c) Mechanical energy storage
- (d) Electromagnetic energy storage

**76. Ans: (c)**

77. What is the standard value of solar constant adopted by World Radiation Centre ?

- (a) 1192 W/m<sup>2</sup>
- (b) 1084 W/m<sup>2</sup>
- (c) 1927 W/m<sup>2</sup>
- (d) 1367 W/m<sup>2</sup>

**77. Ans: (d)**

78. What is the tip speed ratio of savonius wind turbine rotor ?

- (a) 1
- (b) 3
- (c) 5
- (d) 7

**78. Ans: (a)**

79. What is the solidity of American multiblade wind turbine rotor ?

- (a) 0.4
- (b) 0.7
- (c) 0.9
- (d) 1

**79. Ans: (c)**

80. The energy density of Bio-ethanol is

- (a) 8.3 MJ/kg (b) 14.6 MJ/kg  
(c) 26.9 MJ/kg (d) 34.7 MJ/kg

**80. Ans: (c)**

81. The percentage of hydrogen in producer gas is

- (a) 34% (b) 27% (c) 18% (d) 8%

**81. Ans: (d)**

82. In single basin, double effect scheme, power is generated

- (a) during filling. (b) during emptying.  
(c) on ebb only. (d) on both flood and ebb.

**82. Ans: (d)**

83. The operating temperature of alkaline fuel cell is

- (a) 39°C (b) 90°C (c) 127°C (d) 192°C

**83. Ans: (b)**

84. The ideal emf produced by polymer electrolyte membrane fuel cell at 25°C is

- (a) 3.57 V (b) 2.94 V  
(c) 1.23 V (d) 0.73 V

**84. Ans: (c)**

85. Which one of the following fuel cells has highest efficiency ?

- (a) PAFC (b) MCFC  
(c) PEMFC (d) AFC

**85. Ans: (d)**

86. How many kilograms of steam per day is produced by 15 m diameter community solar cooker developed by Centre for Scientific Research, Auroville (Puducherry) ?

- (a) 100 kg (b) 300 kg  
(c) 600 kg (d) 1000 kg

**86. Ans: (c)**

**GATE  
+  
PSUs  
2022**



## Exclusive Online Live **Rank Improvement Batch**

Start from:  
**10<sup>th</sup> JULY,  
2021**

**Discount of Rs.5,000/-**

for IIT/NIT/IIIT students,  
below 5,000 GATE rankers, ESE Prelims cleared students  
ESE Mains cleared students and ACE old students.



87. In a solar passive space heating system, the south-facing thick wall is called

- (a) Vent wall
- (b) Trombe wall
- (c) Damper wall
- (d) Ventilation wall

**87. Ans: (b)**

88. All power plants use superheated steam due to which of the following advantages ?

- 1. Superheating is mostly done from waste heat of boiler without additional cost of fuel.
- 2. The plant efficiency increases due to higher temperature of steam.
- 3. There is less corrosion and erosion of equipment due to absence of moisture in the steam.

Select the correct answer using the code given below :

- (a) 1 and 2 only
- (b) 2 and 3 only
- (c) 1 and 3 only
- (d) 1, 2 and 3

**88. Ans: (d)**

89. What are the effects of regenerative feed water heating for the same turbine output ?

- 1. It significantly increases the cycle efficiency and reduces the heat rate.
- 2. It increases the steam flow rate.
- 3. It increases the steam flow to the condenser.
- 4. If there is no change of boiler output, the turbine output drops.

Select the correct answer using the code given below:

- (a) 1, 2 and 3 only
- (b) 1, 2 and 4 only
- (c) 1, 3 and 4 only
- (d) 2, 3 and 4 only

**89. Ans: (b)**

90. Which of the following are the advantages of pulverized coal firing ?

- 1. Higher boiler efficiency.
- 2. Fast response for no load changes.
- 3. Ability to use low preheated air reducing internal losses.
- 4. Ability to release large amounts of heat enabling it to generate about 2000 t/h of steam in one boiler.

Select the correct answer using the code given below:

- (a) 1 and 2 only
- (b) 1 and 3 only
- (c) 1 and 4 only
- (d) 2, 3 and 4 only

**90. Ans: (c)**

91. A turbine develops 8000 kW when running at 1000 rpm. The head on the turbine is 30 m. If the head is reduced to 18 m, what is the speed developed by the turbine ?

- (a) 67.46 rpm (b) 95.24 rpm  
(c) 54.67 rpm (d) 77.46 rpm

**91. Ans: (d)**

92. The steam turbine can be governed by the following methods except

- (a) Reaction governing  
(b) Throttle governing only  
(c) Nozzle control governing only  
(d) Combination of throttle and nozzle control governing

**92. Ans: (a)**

93. In a gas turbine plant, heat supplied is 667.2 kJ/kg, and heat rejected is 391.43 kJ/kg.

- (a) 57.29% (b) 72.51%  
(c) 41.33% (d) 32.83%

**93. Ans: (c)**

94. The constant pressure gas turbine works on

- (a) Stirling Cycle (b) Atkinson Cycle  
(c) Rankine Cycle (d) Brayton Cycle

**94. Ans: (d)**

95. In hydraulic turbines, if the energy available at inlet is only kinetic energy, then that type of turbine is

- (a) Reaction turbine  
(b) Impulse turbine  
(c) Francis turbine  
(d) Kaplan turbine

**95. Ans: (b)**

96. A centrifugal pump has an impeller of 30 cm outer diameter. The vane tips are radial at the outlet. For a rotative speed of 1450 rpm, what is the manometric head developed ? (Assume a manometric efficiency of 82% and take  $g = 9.81 \text{ m/s}^2$ )

- (a) 37.24 m (b) 43.38 m  
(c) 29.46 m (d) 32.88 m

**96. Ans: (b)**

97. Lenoir cycle is used for

- (a) Gas turbines (b) Pulse jet engines  
(c) S.I. engines (d) C.I. engines

**97. Ans: (b)**

98. A diesel engine has a compression ratio of 20 and cut-off takes place at 5% of the stroke. What is the cut-off ratio ?

- (a) 1.21 (b) 1.47 (c) 1.73 (d) 1.95

**98. Ans: (d)**

99. The cubic capacity of a four-stroke over-square spark-ignition engine is 275 cc. The clearance volume is 25 cc. What is the compression ratio of the engine ?

- (a) 8 (b) 10 (c) 12 (d) 14

**99. Ans: (c)**

100. The mechanical efficiency of a single-cylinder four-stroke engine is 60%. The frictional power is estimated to be 30 kW. What is the indicated power ?

- (a) 120 kW (b) 75 kW  
(c) 150 kW (d) 130 kW

**100. Ans: (b)**

101. A four-stroke petrol engine at full load delivers 100 kW. It requires 10 kW to rotate it without load at same speed. What is the mechanical efficiency at half load ?

- (a) 67.82% (b) 70.24%  
(c) 77.32% (d) 83.33%

**101. Ans: (d)**

102. Freon-12 is used in a simple saturation cycle, with suction saturation temperature of  $-10^{\circ}\text{C}$  and condensing saturation temperature of  $30^{\circ}\text{C}$ . If the clearance volume is 6% of the stroke volume, what is the volumetric efficiency ? (Consider specific volume at suction and discharge to be  $0.07815 \text{ m}^3/\text{kg}$  and  $0.025 \text{ m}^3/\text{kg}$  respectively)

- (a) 87.24% (b) 71.31%  
(c) 64.85% (d) 55.43%

**102. Ans: (a)**

103. Relative ozone destruction efficiency of R-12 is

- (a) 0.29 (b) 0.86  
(c) 0.05 (d) 0.57

**103. Ans: (b)**

104. An air cooled condenser has  $6 \text{ m}^2$  of surface with a removal of  $50 \text{ kJ}\cdot\text{hr}^{-1}\cdot\text{m}^{-2}\cdot^{\circ}\text{C}^{-1}$ . What is the refrigerant temperature to dissipate  $5235 \text{ kJ/hr}$ , if the room temperature is  $25^{\circ}\text{C}$  ?

- (a)  $24.31^{\circ}\text{C}$  (b)  $35.82^{\circ}\text{C}$   
(c)  $42.45^{\circ}\text{C}$  (d)  $56.94^{\circ}\text{C}$

**104. Ans: (c)**

105. The actual and theoretical COP of rolling piston compressor are 3.6 and 4.7 respectively. What is the relative COP ?

- (a) 8.3 (b) 16.92  
(c) 1.3 (d) 0.76

**105. Ans: (d)**

106. A fuel consists of 92% carbon, 7% hydrogen and remaining residual matter by mass. Working from first principles, the higher calorific value of the fuel is

- (a)  $40176 \text{ kJ/kg}$   
(b)  $41176 \text{ kJ/kg}$   
(c)  $40876 \text{ kJ/kg}$   
(d)  $41678 \text{ kJ/kg}$

**106. Ans: (d)**



**ACE<sup>®</sup> x DEEP**  
Engineering Academy  
Leading Institute for ESE/GATE/PSUs  
**LEARN**

## ACE SCHOLARSHIP TEST

# APPSC / TSPSC / SSC



**Exam Date :** 8<sup>th</sup> AUGUST 2021

**Timing:** 11:00 am to 12:00 pm

No. of Questions : 50 Q  
50 Q : 1 Mark  
Total Marks : 50 Marks  
Duration : 60 Mins.

### ONLINE MODE



- AI based proctoring examination
- candidates can take the online test from any location using a laptop/ PC with a connected webcam and good internet connection.
- Audio and video must be turned on through out the duration of the test.

### EXAM SYLLABUS

1. Biology
2. Science & Technology
3. Physics.
4. Chemistry
5. Polity
6. Geography
7. Indian Economy

**PAPER  
GENERAL  
SCIENCE**

### Applicable for:

**DEEP LEARN**

**LIVE CLASSES**

**CLASSROOM COACHING**

Last Date to Apply  
**6<sup>th</sup> August 2021**

Fee: Rs.100/- Only

### Allocation of Scholarships

**75% Fee Waiver\***  
**1st Position**

**60% Fee Waiver\***  
**2nd Position**

**50% Fee Waiver\***  
**3rd Position**

♦ 30% Fee Waiver\* 4th Position ♦ 20% Fee Waiver\* 5th Position

For attaining scholarships, the above positions have to achieve a minimum of **40% marks**.

Registrations start from: 20th July, 2021

**Call: 040-23234418/19/20**

**aceenggacademy.com**



107. In order to burn a fuel completely, which of the following basic conditions must be fulfilled ?
1. Supply enough air for complete combustion of fuel.
  2. Secure low turbulence for thorough mixing of fuel and air.
  3. Maintain a furnace temperature high enough to ignite the incoming fuel air mixture.
  4. Provide a furnace volume large enough to allow time for combustion to be completed.

Select the correct answer using the code given below :

- (a) 1, 2 and 3 only      (b) 1, 2 and 4 only      (c) 1, 3 and 4 only      (d) 2, 3 and 4 only

**107. Ans: (c)**

108. The efficiency of any cycle increases with
- (a) the decrease of maximum pressure and the constant of exhaust pressure.
  - (b) the decrease of maximum pressure and the decrease of exhaust pressure.
  - (c) the increase of maximum pressure and the decrease of exhaust pressure.
  - (d) the increase of maximum pressure and the constant of exhaust pressure.

**108. Ans: (c)**

109. In a power plant, the efficiencies of the electric generator, turbine (mechanical), boiler, cycle and the overall plant are 0.97, 0.95, 0.92, 0.42 and 0.33, respectively. What is the efficiency of auxiliaries ?
- (a) 98.14%      (b) 92.68%      (c) 83.41%      (d) 75.14%

**109. Ans: (b)**

110. Consider the following statements for analysis of steam cycles:
1. A steam power plant continuously converts the energy stored in fossil fuels or fissile fuels into shaft work.
  2. Steam power plants work on Brayton cycle.
  3. In supercritical steam cycle, steam is generated in a 'once-through' boiler at a pressure above the critical point of 27.5 bar.
  4. Deaerator is used for the purpose of deaerating the feedwater.

Which of the above statements are correct ?

- (a) 2 and 3 only      (b) 1 and 3 only  
(c) 1 and 4 only      (d) 2 and 4 only

**110. Ans: (c)**

111. Consider the following statements for solid fuels :

1. Peat is the first stage in the formation of coal from wood.
2. The average calorific value of bituminous coal is 1524 kJ/kg.
3. Anthracite is very hard coal and has a shining black lustre.
4. Wood charcoal is obtained by destructive distillation of wood.

Which of the above statements are correct ?

- (a) 1, 2 and 3 only                      (b) 1, 3 and 4 only  
(c) 2 and 3 only                        (d) 1, 2 and 4 only

**111. Ans: (d)**

112. Consider the following statements for fluidized bed boilers :

1. Fluidized bed boilers produce steam from fossil and waste fuels by using a technique called fluidized bed combustion.
2. Cyclone separators are gas cleaning devices that utilize the centrifugal force created by a spinning gas stream to separate particles from a gas.
3. In a pressurized fluidized bed boiler, the combustion process takes place in a pressurized environment resulting in a compact furnace and improved combustion efficiency.

Which of the above statements are correct ?

- (a) 1 and 2 only                        (b) 2 and 3 only  
(c) 1 and 3 only                        (d) 1, 2 and 3

**112. Ans: (d)**

113. Consider the following statements for steam turbine.

1. The ratio of actual enthalpy drop to isentropic enthalpy drop is known as mechanical efficiency.
2. The ratio of enthalpy drop in moving blades to enthalpy drop in the stage is known as degree of reaction.
3. Rateau turbine is the example of reaction turbine.
4. Curtis turbine is the example of impulse turbine.

Which of the above statements are correct?

- (a) 2 and 4 only                        (b) 1 and 3 only  
(c) 2 and 3 only                        (d) 1, 2, 3 and 4

**113. Ans: (a)**

114. Consider tower following statements for cooling towers:

1. Cooling tower is an artificial device used to cool the hot cooling water coming out of condenser more effectively.
2. The amount of water usually lost with induced draft cooling tower ranges from 5% to 6% by evaporation.
3. The amount of water usually lost with induced draft cooling tower ranges from 7% to 8% by drift losses.
4. The rate of evaporation of water and its cooling effect on the remaining water depends upon the relative humidity of air passing through the tower.

Which of the above statements are correct?

- (a) 1 and 4 only                      (b) 1 and 3 only  
(c) 2 and 3 only                      (d) 1, 2, 3 and 4

**114. Ans: (a)**

115. A single-acting reciprocating pump, running at 50 rpm delivers  $0.00736 \text{ m}^3/\text{s}$  of water. The diameter of the piston is 200 mm and stroke length is 300 mm. What is the percentage slip of the pump?

- (a) 5.29 %                      (b) 6.29%                      (c) 7.29 %                      (d) 8.29 %

**115. Ans: (b)**

116. A pump discharges a liquid into a tank at the rate of  $0.032 \text{ m}^3/\text{s}$ . The tank, 1.5 m in diameter and 4.20 m in height, can hold 3500 kg of liquid. The density of the liquid and mass flow rate of the liquid handled by the pump are respectively.

- (a)  $471.57 \text{ kg/m}^3$  and  $16 \text{ kg/s}$   
(b)  $471.57 \text{ kg/m}^3$  and  $15 \text{ kg/s}$   
(c)  $481.57 \text{ kg/m}^3$  and  $16 \text{ kg/s}$   
(d)  $481.57 \text{ kg/m}^3$  and  $15 \text{ kg/s}$

**116. Ans: (b)**

117. In Francis turbine, as the water discharge is radial at the outlet, the velocity whirl at the outlet becomes.

- (a) 1                      (b) 0                      (c)  $\infty$                       (d) 0.5

**117. Ans: (b)**

118. A pump impeller is 375 mm in diameter and it discharges water with velocity components of 2 m/s and 12 m/s in the radial and tangential directions respectively. The impeller is surrounded by a concentric cylindrical chamber with parallel sides, the outer diameter being 450 mm. If the flow in the chamber is a free spiral vortex, what are the tangential velocity and radial velocity at the outlet of the changer respectively.
- (a) 12 m/s and 1.67 m/s                      (b) 10 m/s and 1.67 m/s  
 (c) 12 m/s and 1.76 m/s                      (d) 10 m/s and 1.76 m/s

**118. Ans: (b)**

119. Which one of the following types of impellers is used to handle highly solid-laden liquids like concrete and slurry?
- (a) Fully Open Impeller  
 (b) Semi-Enclosed impeller  
 (c) Fully-Enclosed impeller  
 (d) Quarter Open Impeller

**119. Ans: (a)**

120. In a single reciprocating pump without air vessel, the ratio of the average frictional head to the maximum frictional head in the delivery pipe is
- (a) 1/2                      (b) 1/3                      (c) 2/3                      (d) 3/4

**120. Ans: (c)**

121. Water is flowing through a pipe of diameter 200 mm with a velocity of 3 m/s. What is the head loss due to friction for a length of 5 m if the coefficient of friction is given by  $f = 0.02 + \frac{0.09}{Re^{0.3}}$ , where Re is Reynolds number ?

[Take the kinematic viscosity of water as 0.01 stoke,  $g = 9.81 \text{ m/s}^2$  and  $(6 \times 10^5)^{0.3} = 54.13$ ]

- (a) 0.993 m of water  
 (b) 0.783 m of water  
 (c) 0.685 m of water  
 (d) 0.552 m of water

**121. Ans: (a)**

122. Water is flowing through a horizontal pipe of diameter 200 mm at a velocity of 3 m/s. A circular solid plate of diameter 150 mm is placed in the pipe to obstruct the flow. What is the loss of head due to obstruction in the pipe if  $C_c = 0.62$  ? (Take  $g = 9.81 \text{ m/s}^2$ )

- (a) 3.311 m (b) 4.211 m  
(c) 5.211 m (d) 6.211 m

**122. Ans: (a)**

123. Three pipes of length 800 m, 500 m and 400 m and of diameters 500 mm, 400 mm and 300 mm respectively are connected in series. These pipes are to be replaced by a single pipe of length 1700 m. What is the diameter of the single pipe?

- (a)  $(0.007188)^{0.2} \text{ m}$  (b)  $(0.003609)^{0.3} \text{ m}$   
(c)  $(0.003609)^{0.2} \text{ m}$  (d)  $(0.007118)^{0.3} \text{ m}$

**123. Ans: (a)**

124. The head of water at the inlet of a pipe 200 m long and 500 mm diameter is 60 m. A nozzle of diameter 100 mm at its outlet is fitted to the pipe. What is the velocity of water at the outlet of the nozzle if  $f = 0.01$  for the pipe ? (Take  $g = 9.81 \text{ m/s}^2$ )

- (a) 30.61 m/s (b) 34.81 m/s  
(c) 36.52 m/s (d) 38.36 m/s

**124. Ans: (a)**

125. Water is flowing with a velocity of 1.5 m/s in a pipe of length 2500 m and of diameter 500 mm. At the end of the pipe, a valve is provided. What is the rise in pressure if the valve is closed in 25 seconds? (Take the value of  $C$  as 1460 m/s)

- (a)  $12 \text{ N/cm}^2$  (b)  $15 \text{ N/cm}^2$  (c)  $16 \text{ N/cm}^2$  (d)  $18 \text{ N/cm}^2$

**125. Ans: (b)**

126. If a submerged body is in unstable equilibrium, then

- (a) the centre of buoyancy is below the centre of gravity.  
(b) the centre of buoyancy is above the centre of gravity  
(c) meta-centre is below the centre of buoyancy  
(d) meta-centre is above the centre of buoyancy

**126. Ans: (b)**



## POSTAL COACHING

**ESE | GATE | PSUs**

**SSC**

ACE Engineering Academy, the leading institute for GATE, ESE and SSC-JE and PSUs offers postal coaching (Distance learning programme) for engineering students.

☎ 040-40044403, 040-23234420 ✉ acepostalcoaching@gmail.com

**ACE PUBLICATIONS**

[www.aceengineeringpublications.com](http://www.aceengineeringpublications.com)



**25% DISCOUNT AVAILABLE**

**amazon**

**Flipkart**



127. How much of concrete with  $\gamma = 25 \text{ kN/m}^3$  must be attached to a beam having a volume of  $0.1 \text{ m}^3$  and specific gravity 0.6 to cause both to sink in water? (Take  $g = 9.81 \text{ m/s}^2$ )

- (a) 0.825 kN (b) 0.745 kN  
 (c) 0.525 kN (d) 0.645 kN

**127. Ans: (d)**

128. A liquid has a specific gravity of 1.9 and a kinematic viscosity of 6 stokes. What is the dynamic viscosity ?

- (a)  $1.14 \text{ Ns/m}^2$  (b)  $2.44 \text{ Ns/m}^2$   
 (c)  $3.40 \text{ Ns/m}^2$  (d)  $11.40 \text{ Ns/m}^2$

**128. Ans: (a)**

129. Oil of specific gravity 0.8 flows through a 0.2 m diameter pipe under a pressure of  $100 \text{ kN/m}^2$ . If the datum is 5 m below the centerline of the pipe and the total energy with respect to the datum is  $35 \text{ Nm/N}$ , the discharge is (Take  $g = 9.81 \text{ m/s}^2$ )

- (a)  $0.58 \text{ m}^3/\text{sec}$  (b)  $0.47 \text{ m}^3/\text{sec}$   
 (c)  $0.31 \text{ m}^3/\text{sec}$  (d)  $0.22 \text{ m}^3/\text{sec}$

**129. Ans: (a)**

130. Bernoulli's equation is obtained by

- (a) integrating the Euler's equation of motion.  
 (b) differentiating the Euler's equation of motion.  
 (c) differentiating the Navier – Stokes equations  
 (d) integrating energy equation.

**130. Ans: (a)**

131. Which one of the following is not the methodology of control separation of flow from boundary in the application of aerofoils?

- (a) Streamlining of blunt body shapes  
 (b) Fluid ejection from the boundary layer  
 (c) Suction of fluid from the boundary layer  
 (d) Creating of motion of the boundary wall

**131. Ans: (d)**

132. What is the value of mass of the air in a room of size  $4\text{ m} \times 5\text{ m} \times 6\text{ m}$  at  $100\text{ kPa}$  and  $25^\circ\text{C}$  ?  
(Take  $R = 0.287\text{ kPa m}^3 \cdot \text{kg}^{-1} \text{ K}^{-1}$ )

- (a) 150 kg (b) 180 kg  
(c) 140 kg (d) 130 kg

**132. Ans: (c)**

133. A body of weight  $100\text{ N}$  is placed on a rough horizontal plane. What is the coefficient of friction if a horizontal force of  $60\text{ N}$  just causes the body to slide over the horizontal plane?

- (a) 0.4 (b) 0.5  
(c) 0.6 (d) 0.9

**133. Ans: (c)**

134. A body is moving with a velocity of  $2\text{ m/s}$ . After 4 seconds, the velocity of the body becomes  $5\text{ m/s}$ . The acceleration of the body is

- (a)  $0.55\text{ m/s}^2$  (b)  $0.65\text{ m/s}^2$   
(c)  $0.75\text{ m/s}^2$  (d)  $0.45\text{ m/s}^2$

**134. Ans: (c)**

135. The principal stresses at a point in an elastic material are  $60\text{ N/mm}^2$  tensile,  $20\text{ N/mm}^2$  tensile and  $50\text{ N/mm}^2$  compressive. What is the volumetric strain by considering Young's Modulus as  $100 \times 10^3\text{ N/mm}^2$  and  $\mu = 0.3$ ?

- (a)  $1.20 \times 10^{-4}$  (b)  $1.06 \times 10^{-5}$   
(c)  $1.30 \times 10^{-3}$  (d)  $1.12 \times 10^{-2}$

**135. Ans: (a)**

136. In an absorption type refrigeration system, heating in generator, refrigeration in evaporator and cooling by cooling water in condenser, take place at  $95^\circ\text{C}$ ,  $-5^\circ\text{C}$  and  $30^\circ\text{C}$  respectively. What is the maximum COP of the system?

- (a) 1.17 (b) 1.35  
(c) 1.52 (d) 1.78

**136. Ans: (b)**

137. Consider the following statements for sensible heat factor:

1. Sensible heat factor will be negative if sensible heat and latent heat are both negative.
2. Sensible heat factor will be negative if sensible heat is negative and latent heat is positive.
3. Sensible heat factor will be negative if sensible heat is positive and latent heat is negative.
4. Sensible heat factor will be negative if sensible heat and latent heat are both sensitive.

Which of the above statements are correct?

- (a) 2 and 3 only                      (b) 1 and 2 only  
(c) 1 and 3 only                      (d) 2 and 4 only

**137. Ans: (a)**

138. If the air is initially at dry bulb temperature  $35^{\circ}\text{C}$  and wet bulb temperature  $26.1^{\circ}\text{C}$  as it enters an air washer which has a humidifying efficiency of  $85^{\circ}\text{C}$  then what is the final dry bulb temperature of air washed with recirculated spray water?

- (a)  $26.81^{\circ}\text{C}$                       (b)  $27.43^{\circ}\text{C}$   
(c)  $32.83^{\circ}\text{C}$                       (d)  $30.49^{\circ}\text{C}$

**138. Ans: (b)**

139. Consider the following statements for Nucleate boiling:

1. For water, the critical heat flux does not exceed  $1 \text{ MW/m}^2$
2. Nucleate boiling is the most desirable boiling regime in practice because of high heat transfer rates.
3. Heat flux increases at a higher rate with increase in temperature.

Which of the above statements is/are correct?

- (a) 1 only                      (b) 2 only  
(c) 1 and 3 only                      (d) 2 and 3 only

**139. Ans: (d)**

140. In drop-wise condensation, the heat transfer rate is

- (a) 5 times less than that in film-wise condensation.  
(b) 15 times less than that in film-wise condensation.  
(c) 25 times more than that in film-wise condensation.  
(d) 10 times more than that in film-wise condensation.

**140. Ans: (d)**



*Heartly Congratulations to our*

# GATE 2021 TOP RANKERS

AIR 1 <sup>ST</sup> IN PRATIK PRAKASH SHINDE	AIR 1 <sup>ST</sup> EE AAKASH DHILL	AIR 1 <sup>ST</sup> ME SUYASH SHARMA	AIR 1 <sup>ST</sup> PI GANESH ADIGAUR	AIR 1 <sup>ST</sup> XE VARUN KAUSHIK		
AIR 2 <sup>nd</sup> ME JAY CHAVDA	AIR 2 <sup>nd</sup> PI GOWTHAM GUDIMELLA	AIR 2 <sup>nd</sup> EC M POOJASREE	AIR 2 <sup>nd</sup> ES ANUSH VERMA	AIR 3 <sup>rd</sup> ME MUNISH KUMAR	AIR 3 <sup>rd</sup> ME NUKULA VISWA TEJA	AIR 3 <sup>rd</sup> PI REHAN ANWAR DESAI
AIR 3 <sup>rd</sup> EC MANOJ KUMAR	AIR 3 <sup>rd</sup> CE SHASHIKANT KUMAR	AIR 3 <sup>rd</sup> EE JAYMAL KHUNTI	AIR 4 <sup>th</sup> PI ROHIT SONI	AIR 4 <sup>th</sup> EC PAKHIL	AIR 4 <sup>th</sup> IN DIVAKAR CH.	AIR 4 <sup>th</sup> IN SAURABH JAISWAL
AIR 4 <sup>th</sup> XE JATIN BHANDARI	AIR 4 <sup>th</sup> ES HEMANTH TIWARI	AIR 5 <sup>th</sup> ME ABHISHEKA	AIR 5 <sup>th</sup> EC VAISHNAV KV	AIR 5 <sup>th</sup> CE PRASHANT DWIVEDI	AIR 5 <sup>th</sup> CS PANKAJ LAHKAR	AIR 5 <sup>th</sup> CS S BHATTACHARJEE
AIR 5 <sup>th</sup> PI SUBHANSHU TIWARI	AIR 6 <sup>th</sup> ME ABHISHEK MEWAR	AIR 6 <sup>th</sup> PI AKASH JAISWAL	AIR 6 <sup>th</sup> EC PARAG SAROHA	AIR 6 <sup>th</sup> IN HARSHIT GUPTA	AIR 6 <sup>th</sup> IN RAJU SHARMA	AIR 6 <sup>th</sup> CE TANMAY MAHAJAN
AIR 6 <sup>th</sup> XE MANISH YADAV	AIR 7 <sup>th</sup> ME VATSAL PANCHAL	AIR 7 <sup>th</sup> PI SACHIN DUBOLIYA	AIR 7 <sup>th</sup> PI ATULYA JYOTHI	AIR 8 <sup>th</sup> ME RAJAT GUPTA	AIR 8 <sup>th</sup> ME ROHIT S PATIL	AIR 8 <sup>th</sup> EC ANKUR LAL MEENA
AIR 8 <sup>th</sup> IN KUNAL SAURAV	AIR 8 <sup>th</sup> CE PRANSHU JANGID	AIR 8 <sup>th</sup> CE RAHUL PATI	AIR 8 <sup>th</sup> EE UJJWAL KUMAR	AIR 8 <sup>th</sup> EE HEMANT JINDAL	AIR 9 <sup>th</sup> EC ABHISHEK SINGH	AIR 9 <sup>th</sup> EC ALEESHA ROSE
AIR 9 <sup>th</sup> EC SAI VAMSI DOSAPATI	AIR 9 <sup>th</sup> IN RAMESH KUMAR	AIR 9 <sup>th</sup> CS NIRANJAN NITIN DHOOT	AIR 9 <sup>th</sup> XE RACHIT KUMAR	AIR 10 <sup>th</sup> ME DEEPESH AGARWAL	AIR 10 <sup>th</sup> PI VYOM SHARMA	AIR 10 <sup>th</sup> IN PRAGYA KAUSHIK
		AIR 10 <sup>th</sup> CE GOVIND PRASAD B	AIR 10 <sup>th</sup> XE D KUMAR PATIL	AIR 10 <sup>th</sup> XE R SHIVAJI NALE		

and many more...

**Total 57 Ranks in Top 10**

ME : 10

PI : 09

CE : 08

EE : 4

EC : 09

CS : 03

IN : 08

XE : 06

141. 1 kg of water falls from an altitude of 1000 m above ground level. What is the change in the temperature of water at the foot of the fall, if there are not losses during the fall?

(Take specific heat of water as  $1 \text{ kcal.kg}^{-1}.\text{K}^{-1}$  and  $g = 9.81 \text{ m/s}^2$ )

- (a)  $3.35^\circ\text{C}$
- (b)  $2.35^\circ\text{C}$
- (c)  $3.32^\circ\text{C}$
- (d)  $4.12^\circ\text{C}$

**141. Ans: (b)**

142. A stationary mass of gas is compressed without friction from an initial state of  $0.3 \text{ m}^3$  and  $0.105 \text{ MPa}$  to a final state of  $0.15 \text{ m}^3$  and  $0.105 \text{ MPa}$ , the pressure remaining constant during the process. There is a transfer of  $40 \text{ kJ}$  of heat from the gas during the process. How much does the internal energy of the gas change?

- (a)  $-24.25 \text{ kJ}$
- (b)  $-19.62 \text{ kJ}$
- (c)  $-15.91 \text{ kJ}$
- (d)  $-12.72 \text{ kJ}$

**142. Ans: (a)**

143. The state of a simple compressible pure substance can be fixed by specifying

- (a) one independent property
- (b) two independent properties
- (c) three independent properties
- (d) four independent properties

**143. Ans: (b)**

144. In a thermoelectric thermometer for  $t^\circ\text{C}$  temperature, the emf is given as:

$$E = 0.003t - 5 \times 10^{-7} t^2 + 0.5 \times 10^{-3} \text{ volts.}$$

Thermometer is having reference junction at ice point and is calibrated at ice point and steam point. What is the temperature shown by the thermometer for a substance at  $30^\circ\text{C}$ ?

- (a)  $33.23^\circ\text{C}$
- (b)  $36.28^\circ\text{C}$
- (c)  $41.23^\circ\text{C}$
- (d)  $46.28^\circ\text{C}$

**144. Ans: (a)**

145. Consider the following statements for comparison of heat and work:

1. Both heat and work are transient phenomena.
2. Both heat and work are boundary phenomena.
3. Both heat and work are path functions and inexact differentials.\

Which of the above statements are correct?

- (a) 1 and 2 only
- (b) 1, 2 and 3
- (c) 2 and 3 only
- (d) 1 and 3 only

**145. Ans: (b)**

146. A tank containing a fluid is stirred by a paddle wheel. The work input to the paddle wheel is 5090 kJ. The heat transfer from the tank is 1500 kJ. What is the change in internal energy of this control mass? (Consider the tank and the fluid inside a control surface)

- (a) – 3590 kJ
- (b) + 3590 kJ
- (c) + 4590 kJ
- (d) – 4590 kJ

**146. Ans: (b)**

147. During the charging of a storage battery, the current is 20 A and the voltage is 12.8 V. The rate of heat transfer from the battery is 10 W. At what rate is the internal energy increasing?

- (a) –256 J/s
- (b) + 246 J/s
- (c) + 256 J/s
- (d) – 246 J/s

**147. Ans: (b)**

148. A refrigerator operates on Reversed Carnot cycle. What is the power required to drive the refrigerator between temperatures of 42°C and 4 °C, if heat at the rate of 2 kJ/s is extracted from the low temperature region?

- (a) 0.174 kW
- (b) 0.374 kW
- (c) 0.274 kW
- (d) 0.474 kW

**148. Ans: (c)**

149. Entropy generated ( $S_{\text{gen}}$ ) can be taken as a criterion to indicated feasibility of process. Which of the following conditions are correct?

1. If  $S_{\text{gen}} = 0$ , then the process is a reversible process.
2. If  $S_{\text{gen}} > 0$ , then the process is an irreversible process
3. If  $S_{\text{gen}} < 0$ , then the process is impossible.

Select the correct answer using the code given below:

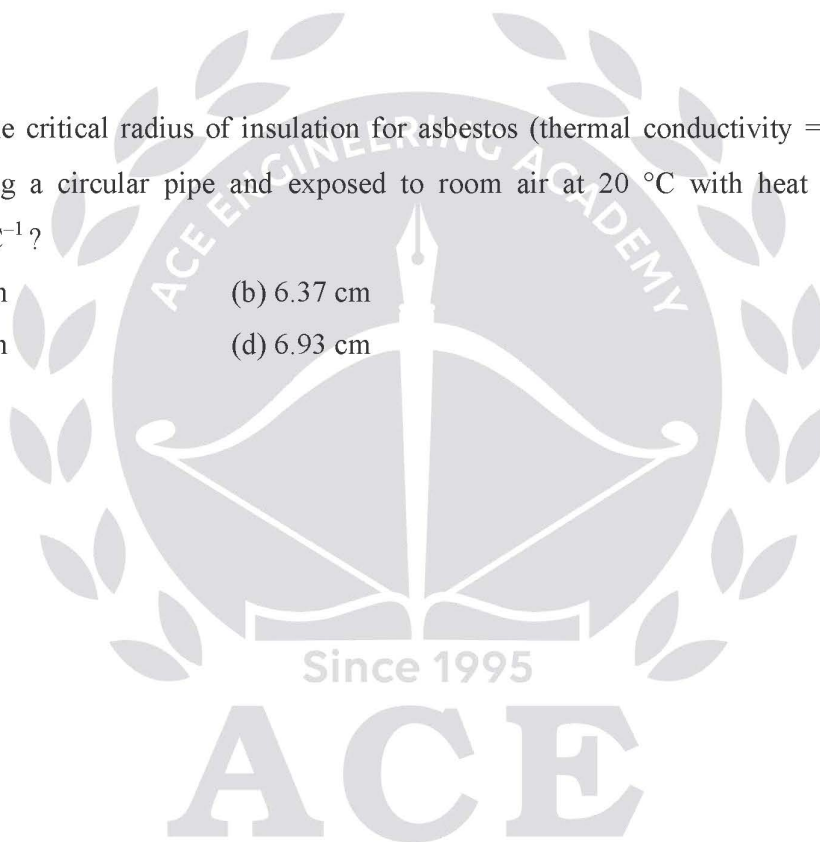
- (a) 1 and 2 only                      (b) 2 and 3 only  
(c) 1 and 3 only                      (d) 1, 2 and 3

**149. Ans: (d)**

150. What is the critical radius of insulation for asbestos (thermal conductivity =  $0.17 \text{ W.m}^{-1}.^{\circ}\text{C}^{-1}$ ) surrounding a circular pipe and exposed to room air at  $20^{\circ}\text{C}$  with heat transfer coefficient  $3 \text{ Wm}^{-2}.^{\circ}\text{C}^{-1}$ ?

- (a) 7.21 cm                      (b) 6.37 cm  
(c) 5.67 cm                      (d) 6.93 cm

**150. Ans: (c)**





*Hearty Congratulations to our*

# ESE - 2020 TOP RANKERS

AIR <b>1</b>  CHARUDATTA S ME	AIR <b>1</b>  SHASHANK GAUR EE	AIR <b>1</b>  PRAKASH JHA E&T	AIR <b>1</b>  GAURAV KUMAR CE
AIR <b>2</b>  K S SHARADRAO ME	AIR <b>2</b>  ABHISHEK SINGH EE	AIR <b>2</b>  PARTH BATRA E&T	AIR <b>2</b>  PRASHANT SINGH CE
AIR <b>3</b>  SURAJ KUMAR S ME	AIR <b>3</b>  VIKASH SHANKAR EE	AIR <b>3</b>  RAHUL NAREDI E&T	AIR <b>3</b>  KULDEEP JANGRA CE
AIR <b>4</b>  SHUBHAM B ME	AIR <b>4</b>  ANUPAM S EE	AIR <b>4</b>  SHUBHAM E&T	AIR <b>4</b>  ANISH BAGGA CE
AIR <b>5</b>  KAMLESH PARWAR ME	AIR <b>5</b>  MANOJ KUMAR E&T	AIR <b>5</b>  PAVITRA GOYAL CE	AIR <b>5</b>  MD ZUHAIB ME
AIR <b>6</b>  VISHWA SIMHAA EE	AIR <b>6</b>  SAURAV KUMAR S E&T	AIR <b>6</b>  PRATEEK S ME	AIR <b>6</b>  DINESH KUMAR S EE
AIR <b>7</b>  RAGHAV PURWAR E&T	AIR <b>7</b>  V SAIKRISHNA REDDY ME	AIR <b>7</b>  GAGAN GHUNAWAT EE	AIR <b>7</b>  RAM KRISHNA E&T
AIR <b>8</b>  GANESH KUMAR A ME	AIR <b>8</b>  AKSHAY KUMAR T EE	AIR <b>8</b>  CHHAVI JAIN E&T	AIR <b>8</b>  ARPIT JAIN CE
AIR <b>9</b>  HEMABH TRIVEDI ME	AIR <b>9</b>  RAJAT DIXIT EE	AIR <b>9</b>  L KUMARI JAISWAL E&T	AIR <b>9</b>  AMIT SHARMA CE

and many more...

**TOTAL 36 RANKS IN TOP 10**

ME 10

EE 09

E&T 10

CE 07