



ACE

Engineering Academy



Hyderabad | Delhi | Bhopal | Pune | Bhubaneswar | Bengaluru | Lucknow | Patna | Chennai | Vijayawada | Visakhapatnam | Tirupati | Kukatpally | Kolkata

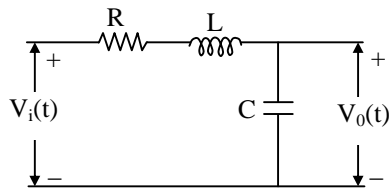
H.O: 204, II Floor, Rahman Plaza, Opp. Methodist School, Abids, Hyderabad-500001,
Ph: 040-23234418, 040-23234419, 040-23234420, 040 - 24750437

ESE- 2018 (Prelims) - Offline Test Series **Test- 13**
ELECTRONICS & TELECOMMUNICATION ENGINEERING

SUBJECT: CONTROL SYSTEMS + ANALOG ELECTRONICS
+ DIGITAL ELECTRONICS MICRO PROCESSOR
SOLUTIONS

01. Ans: (d)

Sol: Given circuit is shown in below figure.



$$\frac{V_o(s)}{V_i(s)} = \frac{\frac{1}{Cs}}{R + Ls + \frac{1}{Cs}} = \frac{1}{RCs + LCs^2 + 1}$$

CE is $LCs^2 + RCs + 1 = 0$

$$\Rightarrow s^2 + \frac{R}{L}s + \frac{1}{LC} = 0 \dots\dots (1)$$

We know for standard second order characteristic equation

$$s^2 + 2\zeta\omega_n s + \omega_n^2 = 0 \dots\dots (2)$$

$\zeta = 0$ for undamped system

$0 < \zeta < 1$ for under damped system

For system poles to be on real axis, $\zeta > 1$

For system poles to be on complex plane, $\zeta < 1$.

Compare (1) , (2) we get

$$\omega_n = \frac{1}{\sqrt{LC}}, \zeta = \frac{R}{2} \sqrt{\frac{C}{L}}$$

For $R = 0 \Rightarrow \zeta = 0$

For $R = 1\Omega, L = 1H, C = 1F, \zeta = \frac{1}{2} < 1$

For $\zeta > 1 \Rightarrow R > 2\sqrt{\frac{L}{C}}$

For $\zeta < 1 \Rightarrow R < 2\sqrt{\frac{L}{C}}$

From all above conclusions

Statements 1, 2, 3 are correct



02. Ans: (c)

Sol: C.L.T.F. = $\frac{s^2}{2s+1} = \frac{s^2}{1 + \frac{s^2}{2s+1}} = \frac{s^2}{s^2 + 2s + 1}$

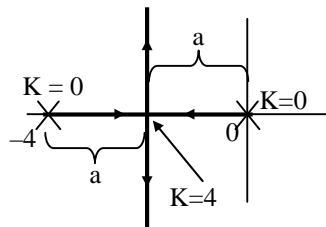
C.E is $s^2+2s+1=0 \Rightarrow s=-1, -1 \Rightarrow$ system is critically damped.

Order of the system is two

\therefore Both statements are correct.

03. Ans: (d)

Sol: Root Locus plot is as shown below



'K' at break point = (a) $(a) = a^2$

$\Rightarrow a^2 = 4$

$\Rightarrow a = 2$

$\therefore s = -2$

System is over damped for poles on real axis i.e $0 < k < 4$ only.

As two branches are there, so it is second order system.

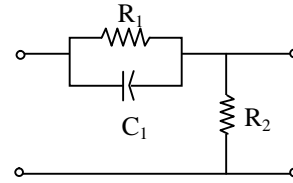
System to be under damped, poles should be on complex plane.

$\therefore 4 < k < \infty$.

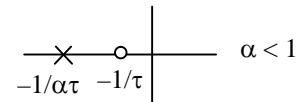
So Statements 1, 4 are true.

04. Ans: (b)

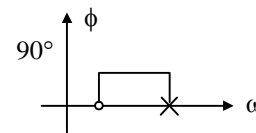
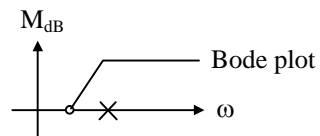
Sol:



$TF_{lead} = \frac{\tau s + 1}{\alpha \tau s + 1} \quad \alpha < 1$



It adds a dominant zero



- It adds positive phase angle
- The system is always stable as the pole is in LHP
- Its magnitude will vary with frequency as shown in bode plot

\therefore 1, 2, 3 are correct

05. Ans: (d)

Sol: All the statements are true. Therefore correct option is (d).

06. Ans: (a)

Sol: $k = -(s(s+4)(s^2+4s+8))$

$k = -(s^4+8s^3+24s^2+32s)$



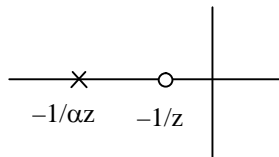
$$\frac{dk}{ds} = -(4s^3 + 24s^2 + 48s + 32) = 0$$

$$s = -2, -2, -2$$

$s = -2$ is a break point.

07. Ans: (a)

Sol: The compensator is lead



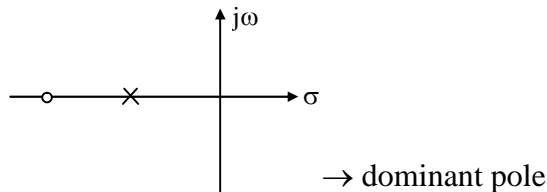
$$\omega_n = \sqrt{1 \times 10} = \sqrt{10} \text{ rad/sec}$$

The maximum phase angle is obtained at

$$\sqrt{10} \text{ rad/sec}$$

08. Ans: (b)

Sol: Lag compensator, pole-zero diagram



Lag compensator decreases ω_{gc} , bandwidth.

09. Ans: (c)

$$\text{Sol: } CLTF = \frac{C(s)}{R(s)} = \frac{KG}{1 + KGH}$$

$$S_K^{CLTF} = \frac{1}{1 + KGH}$$

$$S_G^{CLTF} = \frac{1}{1 + KGH}$$

$$S_H^{CLTF} = \frac{-KGH}{1 + KGH}$$

If loop gain is high

$$KGH \rightarrow \infty$$

$$mS_K^{CLTF} = 0, S_G^{CLTF} = 0, S_H^{CLTF} = -1$$

10. Ans: (d)

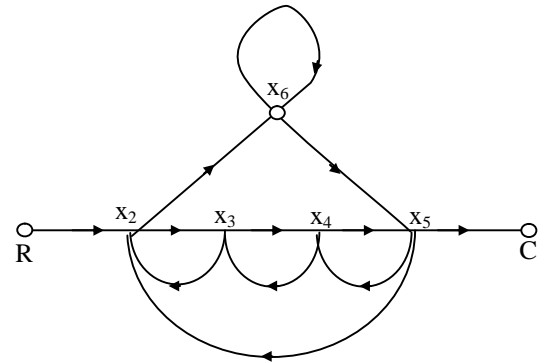
$$\text{Sol: } M_p = e^{-\pi\zeta/\sqrt{1-\zeta^2}}$$

$$\zeta = \cos\theta$$

$$= e^{-\frac{\pi \cos\theta}{\sin\theta}} = e^{-\pi \cot\theta}$$

11. Ans: (b)

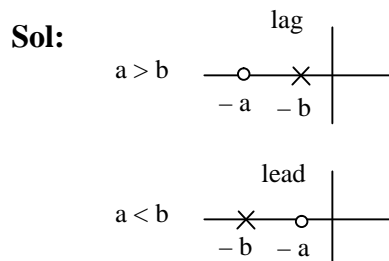
Sol: Given signal flow graph is as shown below



Forward paths are

$$\Rightarrow \left. \begin{aligned} &(R, x_2, x_3, x_4, x_5, C) \\ &(R, x_2, x_6, x_5, C) \end{aligned} \right\} \text{two forward paths}$$

12. Ans: (a)

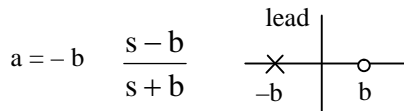




b = 0

$$G(s) = \frac{s+a}{s} = 1 + \frac{a}{s}$$

∴ PI controller



All pass system

Therefore 1,2,3,4 are correct

13. Ans: (b)

Sol: TF from root locus is $= \frac{k}{s(s+a)(s+b)}$,

where a, b are +ve

- The system is 3rd order
 - It has break point between (0, -a)
 - The system will be marginally stable for some k
- There fore only 1, 2 are correct

14. Ans: (a)

Sol: Forward path going are $H_1G_1, H_2G_1G_2$

- Loop gains are $-H_1G_1, -H_2G_1G_2$
- Both loops are touching loops so 3 is incorrect

Pre GATE-2018

COMPUTER BASED TEST

Date of Exam : 20th Jan 2018

Last Date To Apply : 05th Jan 2018



15. Ans: (b)

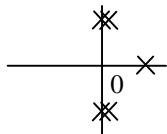
Sol: From RH criteria

s^5	1	2	1	
s^4	-1	-2	-1	AE ₁
s^3	(0) -4	(0) -4	0	Row of zero
s^2	-1	-1	0	AE ₂
s^1	(0) -2	0		Row of zero
s^0	-1			

No sign change below AE so all four roots of AE equation lies on $j\omega$ axis.

$$AE = -s^4 - 2s^2 - 1 = 0$$

$$(s^2 + 1)^2 = 0$$



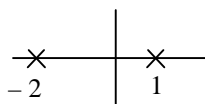
0 Poles \rightarrow LHP

4 Poles \rightarrow $j\omega$ -axis

1 Pole \rightarrow RHP (one sign change on first column)

16. Ans: (c)

Sol: $G(s) = \frac{10}{(s-1)(s+2)}$



So, $G(s)$ is unstable

$$\frac{C(s)}{R(s)} = \frac{G(s)}{1+G(s)} = \frac{10}{(s-1)(s+2)+10}$$

$$= \frac{10}{s^2 - 2 + 2s - s + 10}$$

$$= \frac{10}{s^2 + s + 8}$$

$$C.E = s^2 + s + 8 = 0$$

$$s^2 \quad \left| \begin{array}{l} 1 \quad 8 \end{array} \right.$$

$$s^1 \quad \left| \begin{array}{l} 1 \quad 0 \end{array} \right.$$

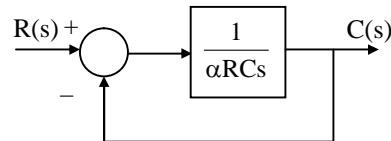
$$s^0 \quad \left| \begin{array}{l} 8 \end{array} \right.$$

There is no sign changes in the first column of RH criteria table. Therefore the

closed loop $\frac{C(s)}{R(s)}$ is stable

17. Ans: (a)

Sol: $\frac{V_0(s)}{V_1(s)} = \frac{1}{\alpha RCs + 1}$



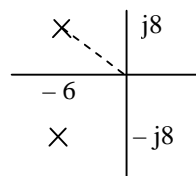
$$k_v = \lim_{s \rightarrow 0} s.G(s) = \lim_{s \rightarrow 0} s \frac{1}{\alpha RCs} = \frac{1}{\alpha RC}$$

$$e_{ss} = \frac{1}{k_v} = \alpha RC$$

18. Ans: (d)

Sol: Compare $C(t) = ke^{-\alpha t} \sin \omega_d t u(t)$

We get $\alpha = 6$, $\omega_d = 8$





The radial distance $\omega_n = 10 \text{ rad/sec}$

$$\cos \theta = \zeta = \frac{6}{10} = 0.6$$

$$\omega_d = 8 \text{ rad/sec}$$

19. Ans: (c)

20. Ans: (c)

Sol: $e_{ss} = \frac{A}{1+k_p}$ for step input

$$e_{ss} = \frac{A}{k_v}$$
 for ramp input

$$e_{ss} = \frac{A}{k_a}$$
 for parabolic input

Where

$$k_p = \lim_{s \rightarrow 0} s G(s), k_v = \lim_{s \rightarrow 0} s G(s), k_a = \lim_{s \rightarrow 0} s^2 G(s)$$

For type 0- system, $k_p = \text{finite} \Rightarrow e_{ss}$ is finite

For type 2-system, $k_v = \infty \Rightarrow e_{ss} = 0$

$$k_a = \text{finite} \Rightarrow e_{ss} = \text{finite}$$

For type-1 system, $k_p = \infty \Rightarrow e_{ss} = 0$

\therefore statements 1,2 are correct

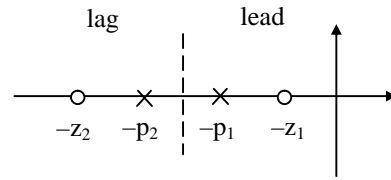
21. Ans: (d)

Sol: System is under damped when poles are on complex plane.

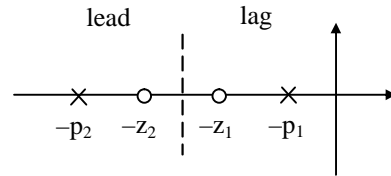
\therefore For $0.7 < k < 14$ system is under damped.

22. Ans: (a)

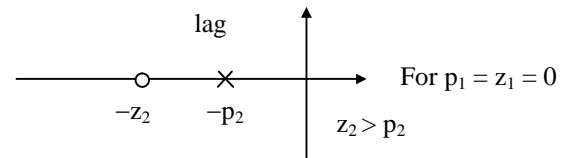
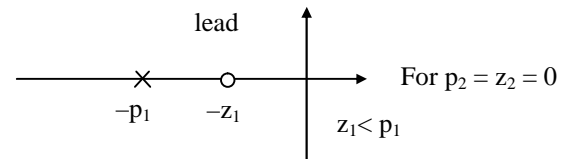
Sol:



$$z_1 < p_1 < p_2 < z_2$$



$$p_1 < z_1 < z_2 < p_2$$

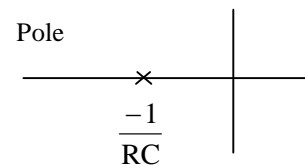


So, 1, 2, 3 correct.

23. Ans: (b)

Sol: The circuit is 1st order RC network

$$TF = \frac{1}{RCs + 1}$$



\rightarrow For whatever RC value the pole location is on real axis



∴ It will never produce oscillations.

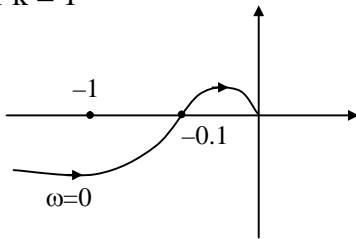
→ Since pole of the system is on real axis and the system has only one pole.

It will produce -ve phase angle for sin input, 1, 3, 4 are correct.

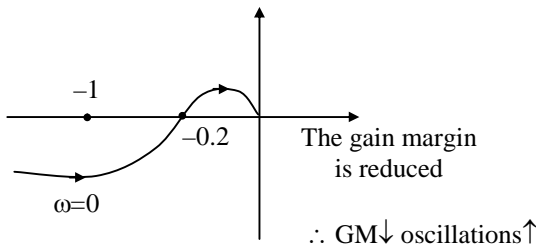
24. Ans: (c)

Sol: The plot is given for k = 1

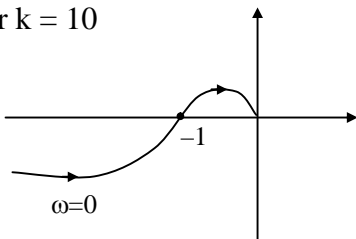
For k = 1



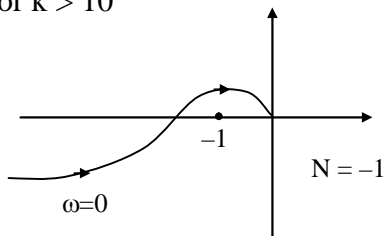
For k = 2



For k = 10



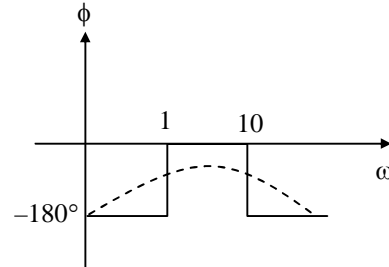
For k > 10



(-1, 0) is enclosed therefore system is unstable.

25. Ans: (b)

Sol:

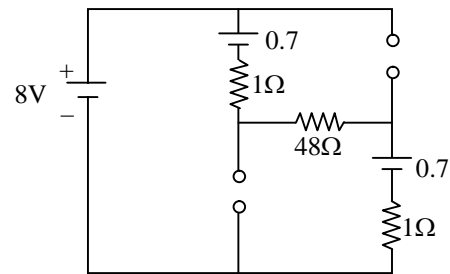


The phase plot of the system $\omega = 10, -90^\circ$

26. Ans: (b)

27. Ans: (c)

Sol:



By KVL

$$8 - 0.7 - i - 48i - 0.7 - i = 0$$

$$8 - 1.4 = 50i$$

$$i = \frac{6.6}{50}$$

$$i = 0.132$$

$$i = 132 \text{ mA}$$

28. Ans: (a)

29. Ans: (d)

$$\text{Sol: } (\text{gain})_{\text{dB}} = 10 \log_{10}^{26/13} = 10 \log_{10}^2 = 3 \text{ dB}$$



ESE | GATE - 2019

LONG TERM BATCHES

EC | EE | ME | CE | CS | IN | PI

Start Early, Gain Surely



Pioneer to Leader



Dedicated Service



Experienced Faculty from Central Pool

Admissions are open at all our centers

H. O. : Hyderabad : Ph : 040-23234418,19,20

Bangalore 9341299966	Kukatpally 040-6597 4465	Delhi 9205282121	Bhopal 0755-2554512	Pune 020-25535950	Bhubaneswar 0674-2540340	
Lucknow 808199966	Patna 9308699966	Chennai 044-42123289	Vijayawada 0866-2490001	Vishakapatnam 0891-6616001	Tirupathi 0877-2244388	Kolkata 8297899966

30. Ans: (a)

Sol: $C_1 = 1\text{nF}$, $C_2 = 10\text{nF}$ & $L = 0.1\mu\text{H}$

$$|A| \geq \frac{C_2}{C_1} = \frac{10\text{nF}}{1\text{nF}} = 10.$$

31. Ans: (d)

Sol:

The output frequency component

$$= nf_1 \pm mf_2$$

32. Ans: (d)

$$\text{Sol: } \frac{dA_f}{A_f} = \frac{dA}{A} \left(\frac{1}{1 + A\beta_f} \right)$$

$$\frac{0.1}{100} = \frac{10}{1000} \left[\frac{1}{1 + 1000\beta_f} \right]$$

$$1 + 1000\beta_f = 10$$

$$\beta_f = \frac{9}{1000}.$$

33. Ans: (b)

Sol: gain = 30 dB

$$30\text{dB} = 10 \log_{10} \left(\frac{P_o}{P_i} \right)$$

$$\Rightarrow 3 = \log_{10} \left(\frac{P_o}{P_i} \right)$$

$$\frac{P_o}{P_i} = 10^3$$

$$P_o = 10^3 \times P_i$$

$$P_o = 10^3 \times 1 \times 10^{-6}$$

$$P_o = 10^{-3} \text{ W}, \quad P_o = 1\text{mW}$$

$$P_{o \text{ in dB}} = 10 \log_{10}^1 = 0\text{dBm}$$



34. Ans: (d)

35. Ans: (c)

Sol: Ripple factor in LC filter = $\frac{\sqrt{2}}{3} \frac{1}{4\omega^2 CL}$

For frequency of 50Hz

ripple factor (γ) = $\frac{1.194}{LC}$

So, it remains constant.

36. Ans: (a)

37. Ans: (d)

38. Ans: (d)

Sol: $V_T = 0.5V$

$V_{GS} = V_G - V_S = 0 - 0 = 0V$

$V_{GS} < V_T \rightarrow$ Cutoff Region

So $I_D = 0, V_D = 6V$

39. Ans: (a)

40. Ans: (d)

Sol: For an ideal feedback circuit to have sustained oscillation the loop gain is 1. For practical feedback circuit the loop gain varies from 1.01 to 1.05 (slightly greater than one) for sustained oscillation.

41. Ans: (a)

Sol: $A_d = 2000$

$CMRR = 1000$

$V_{non-inv} = 5.001V$

$V_{inv} = 4.999V$

Common mode gain $A_c = \frac{A_d}{CMRR} = \frac{2000}{1000} = 2$

Differential voltage $V_d = V_{non-inv} - V_{inv}$
 $= 5.001 - 4.999 =$

$2 \times 10^{-3}V$

Common mode voltage

$V_c = \frac{V_{non-inv} + V_{inv}}{2} = \frac{5.001 + 4.999}{2} = 5V$

$V_0 = A_d V_d + A_c V_c$
 $= 2000 \times 2 \times 10^{-3} + 2 \times 5$
 $= 4 + 10$
 $= 14V$

42. Ans: (c)

Sol: Duty cycle

$$= \frac{\text{ON Time}}{\text{ON Time} + \text{OFF Time}} = \frac{(R_A + R_B)C}{(R_A + R_B)C + R_B C}$$

$$= \frac{(R_A + R_B)}{(R_A + 2R_B)}$$

Duty cycle of the output waveform V_0 not depend upon capacitor 'C'.

GATE - 2018

ONLINE TEST SERIES

No. of Tests : 62

All tests will be available till
12th February 2018

ESE - 2018 PRELIMS

ONLINE TEST SERIES

No. of Tests : 44

All tests will be available till
07th January 2018

ISRO - 2017

ONLINE TEST SERIES

No. of Tests : 15

All tests will be available till
25th December 2017

★ HIGHLIGHTS ★

- Detailed solutions are available.
- **All India rank** will be given for each test.
- Comparison with all India toppers of **ACE** students.

 www.aceenggacademy.com

 testseries@aceenggacademy.com

43. Ans: (c)

44. Ans: (c)

45. Ans: (c)

Sol: For the given input voltages

D1 will be ON & D2 will be OFF

⇒ Voltage at 'P' will be 2V

$$\therefore I = \frac{5V - 2V}{1K} = 3mA$$

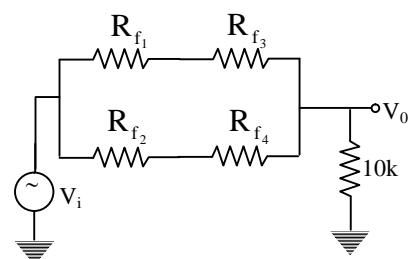
46. Ans: (d)

47. Ans: (b)

Sol: Step 1: Forward dynamic resistance of the diodes,

$$R_f = \frac{V_T}{I_D} = \frac{0.025V}{\frac{1mA}{2}} = 50\Omega$$

Step 2: Equivalent circuit of figure





Note: $R_{f_1} = R_{f_2} = R_{f_3} = R_{f_4} = R_f$
(\therefore All the diodes are identical)

$$V_0 = \frac{10K V_i}{10K + [2R_f \parallel 2R_f]}$$

$$\frac{V_0}{V_i} = \frac{10K}{10K + [100\Omega \parallel 100\Omega]}$$

$$\therefore \frac{V_0}{V_i} = 0.995$$

48. Ans: (c)

Sol: We have, line regulation, $\eta_i = \frac{\Delta V_0}{\Delta V_i}$

$$= \frac{r_z}{r_z + R_s}$$

$$= \frac{10}{10 + 80}$$

$$= \frac{1}{9}$$

$$\Rightarrow \frac{\Delta V_0}{\Delta V_i} = \frac{1}{9}$$

$$\therefore \Delta V_0 = \frac{1}{9} \times \Delta V_i = \frac{1}{9} \times 0.9V = 100mV$$

49. Ans: (a)

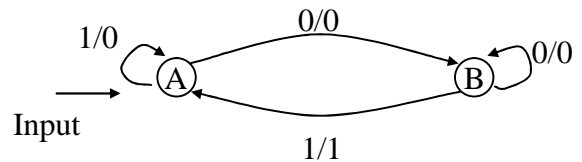
Sol: Binary zero has unique representation in 2'S complement representation. So this representation is widely used.

50. Ans: (b)

51. Ans: (c)

52. Ans: (c)

Sol: The given state diagram detects 01,001,001,00001,.....



53. Ans: (a)

Sol: A 01

A 00, (Cy = 0, AC = 0)

Loop: A FF (bit carry flag is not affected JNC loop is failed)

Hence HLT is executed

54. Ans: (d)

55. Ans: (a)

56. Ans: (c)

57. Ans: (b)

Sol: (a)& (c) are not valid instructions.

SBI 98H \Rightarrow subtract immediate with borrow

SUI 98H \Rightarrow subtract immediate (no borrow)

58. Ans: (a)

Sol: XTHL exchanges the contents of L register with the contents of memory location specified by the stack, pointer the contents of the H register are exchanged with the contents of stack pointer +1.



59. Ans: (a)

60. Ans: (a)

61. Ans: (d)

Sol: All are the properties of EEPROM. EEPROM'S are fabricated using NMOS /CMOS, where as PROMS and ROMS use bipolar TTL. Hence EEPROM'S have longer delays.

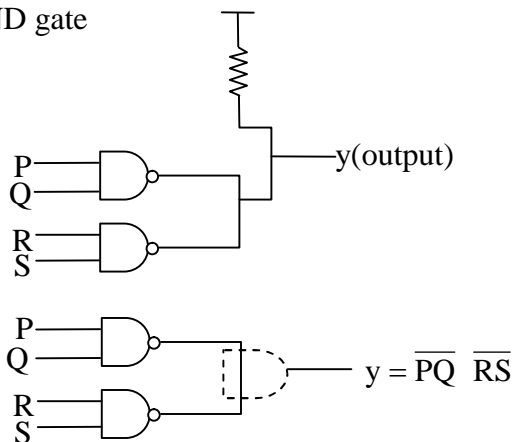
62. Ans:(d)

Sol:

(i)	(ii) HL ← 5000H	(iii) A ← 6AH
A ← 96H	M ← 96H	A ← 95H
96H → (5000H)	M ⇒ contents of HL	A ← 96 → (5000)

63. Ans:(a)

Sol: Whenever open collector (TTC) configuration then wired connection is AND gate



64. Ans:(c)

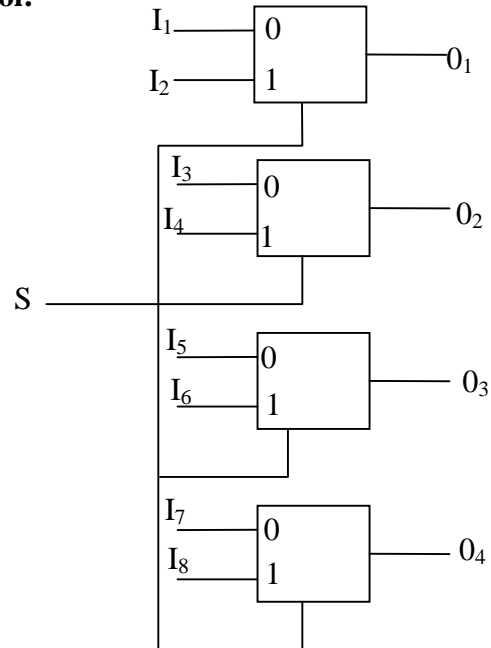
Sol: 64K ⇒ $2^{16} = 2^8 \times 2^8$ (Coincident decoding)

$$= 256 \times 256$$

Each decoder is 8×256 side

65. Ans: (a)

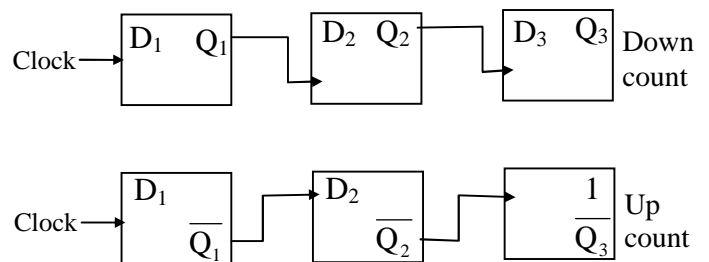
Sol:



Total 9 input 4 outputs so ROM side $= 2^9 \times 4$
($2^{\text{no of inputs}} \times \text{no of outputs}$)

66. Ans: (c)

Sol: Both statements are correct

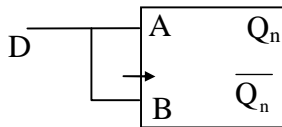
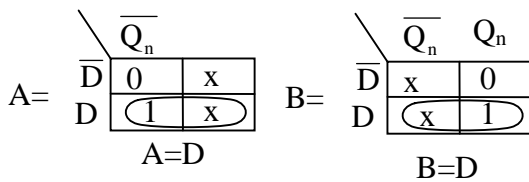




67. Ans: (a)

Sol:

D	Q _m	Q _n	A	B
0	0	0	0	X
0	1	0	X	0
1	0	1	1	X
1	1	1	X	1

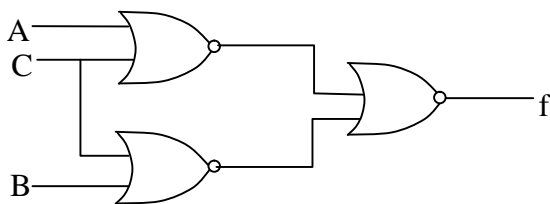


68. Ans: (b)

Sol: $f = AB + C$

$$F = (A + C) B + C$$

To implement using NOR gates, go for POS form.



69. Ans: (a)

Sol: To check commutative $\Rightarrow x \oplus y = y \oplus x$

$$\text{L.H.S } x \oplus y = x^2 + y^2 \rightarrow (1)$$

$$\text{R.H.S } y \oplus x = y^2 + x^2 \rightarrow (2)$$

$$(1) = (2)$$

To check associative

$$\Rightarrow (x \oplus y) \oplus z = x \oplus (y \oplus z)$$

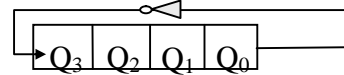
$$\begin{aligned} \text{L.H.S } (x \oplus (y \oplus z)) &= (x^2 + y^2) \oplus z \\ &= (x^2 + y^2) + z^2 \rightarrow (3) \end{aligned}$$

$$\begin{aligned} \text{R.H.S } x \oplus (y \oplus z) &= x \oplus (y^2 + z^2) \\ &= x^2 + (y^2 + z^2)^2 \rightarrow (4) \end{aligned}$$

$$(3) \neq (4)$$

70. Ans: (d)

Sol:



Clock	0	0	0	0
1	1	0	0	0 (8)
2	1	1	0	0 (12)
3	1	1	1	0 (14)
4	1	1	1	1 (15)
5	0	1	1	1 (7)
6	0	0	1	1 (3)
7	0	0	0	1 (1)
8	0	0	0	0 (0)

71. Ans: (b)

Sol: \rightarrow Its noise immunity and power dissipation are worst of all logic families

\rightarrow The outputs provide "OR" and "NOR" families

\rightarrow Because of high speed, external wires act like transmission lines



72. Ans: (a)

$$\text{Sol: Slew Rate (SR)} = \left. \frac{dV_0}{dt} \right|_{\max}$$

In ideal Op – Amp Slew Rate is Very high

73. Ans: (a)

74. Ans: (a)

75. Ans: (c)